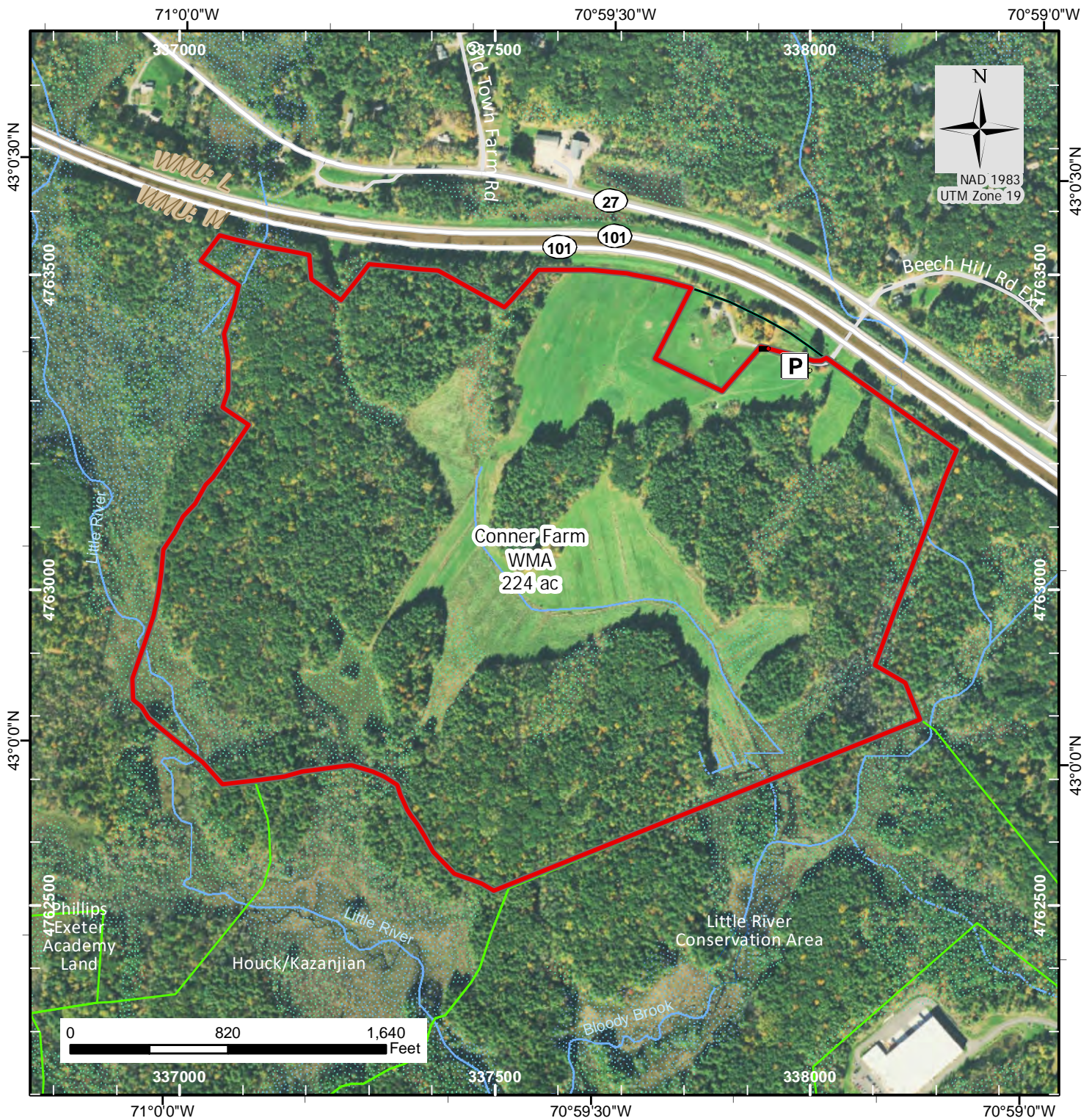




NH Fish and Game Department Wildlife Management Areas

Conner Farm WMA (town: Exeter, wmu: M)



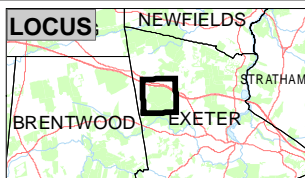
Access and/or activities may be Restricted.

CAUTION: Trails and roads on WMAs are maintained for management access - not for recreational use. However, you are welcome to use them at your own discretion.

Not all conservation land is open to hunting.

NHFGD highly recommends that each hunter personally contact landowners whenever possible and seek permission to hunt.

Most data presented on this map represent stock data sets from NH GRANIT at UNH. The cooperating agencies make no claim as to the validity or reliability or to any implied uses of these data.



NH Fish and Game Department, Wildlife Division
11 Hazen Dr, Concord NH 03301-6500
603-271-2461 Email: wildlife@wildlife.nh.gov

- NH Wildlife Management Area
- Parcel for which NH Fish and Game or NH Dept of Resources & Economic Dev. is fee owner or holds an easement.
- Other Conservation or Public Land
- ~ Stream or Shoreline
- Wetland
- Town boundary
- ~ Route
- ~ Road or Street
- ~ Trail

2018 NAIP orthophoto collected summer/fall, USDA