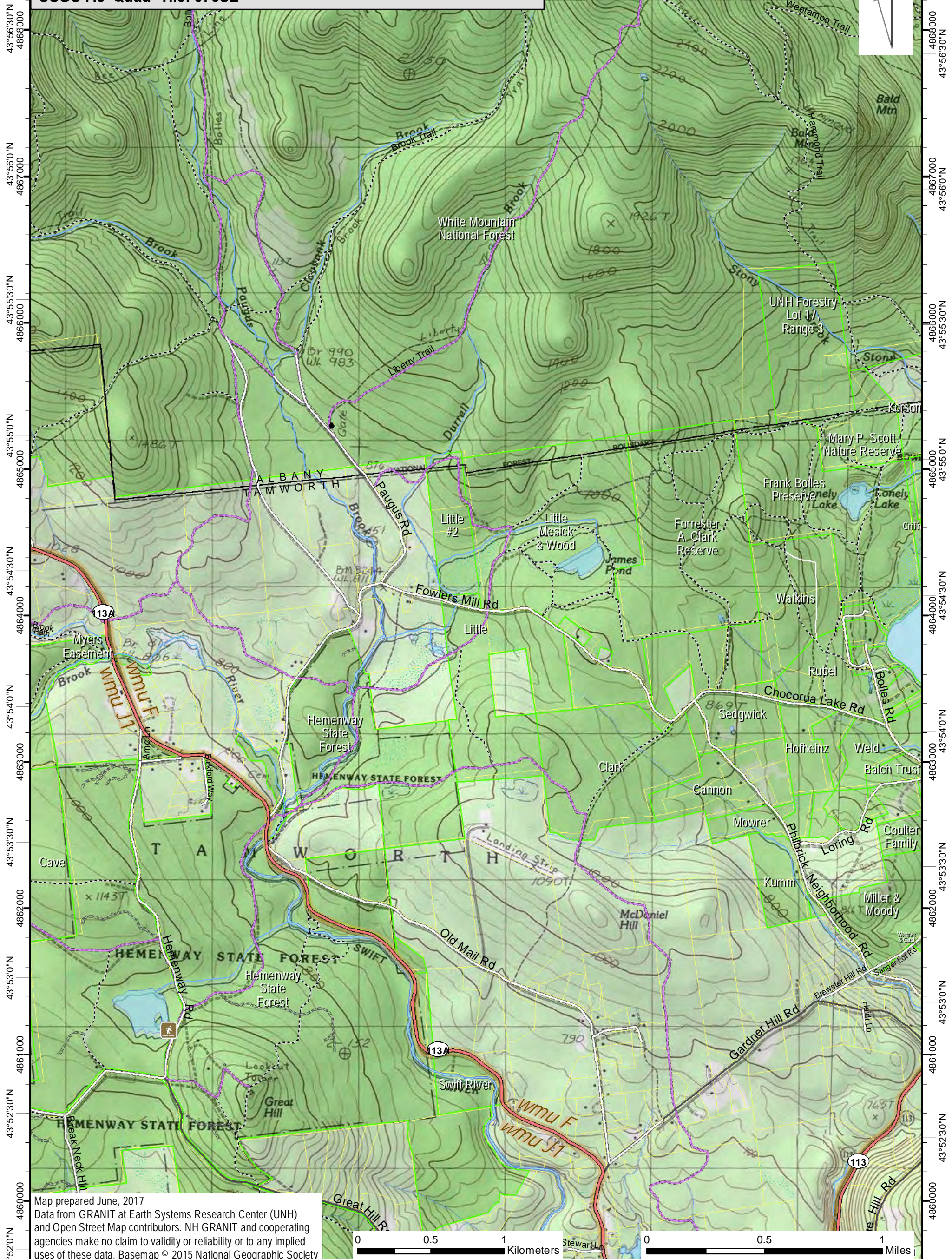
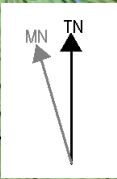


71°19'0"W 314000 71°18'30"W 315000 71°18'0"W 316000 71°17'30"W 317000 71°17'0"W 318000 71°16'30"W 319000 71°16'0"W 318000 71°15'30"W 319000 71°15'0"W

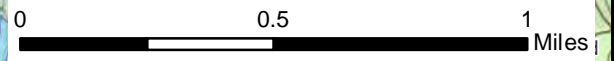
MOUNT CHOCORUA
USGS 7.5' Quad- Tile: 076SE



43°56'30"N 4868000
43°56'0"N 4867000
43°55'30"N 4866000
43°55'0"N 4865000
43°54'30"N 4864000
43°54'0"N 4863000
43°53'30"N 4862000
43°53'0"N 4861000
43°52'30"N 4860000
43°52'0"N 4860000

4868000 43°56'30"N
4867000 43°56'0"N
4866000 43°55'30"N
4865000 43°55'0"N
4864000 43°54'30"N
4863000 43°54'0"N
4862000 43°53'30"N
4861000 43°53'0"N
4860000 43°52'30"N
4860000 43°52'0"N

Map prepared June, 2017
Data from GRANIT at Earth Systems Research Center (UNH)
and Open Street Map contributors. NH GRANIT and cooperating
agencies make no claim to validity or reliability or to any implied
uses of these data. Basemap © 2015 National Geographic Society



71°19'0"W 71°18'30"W 71°18'0"W 71°17'30"W 71°17'0"W 71°16'30"W 71°16'0"W 71°15'30"W 71°15'0"W 71°14'30"W