

For fishing regulation information, please refer to the NHFGD Freshwater Fishing Digest.

Contact: NHFGD Region 2 (Lakes Region), New Hampton
E-mail: reg2@wildlife.nh.gov Phone: 603-744-5470

WHITTON POND Albany/Madison

FISHERY: Warmwater **ACRES:** 164

TROPIC LEVEL: MESO

AVG. DEPTH: 12 **MAX. DEPTH:** 57

SPECIES: SMB,ECP,BBH,YP,CSF

ADDITIONAL INFO: limited shorebank access

ACCESS: No public boat access

Please contact NH Dept of Safety, Marine Patrol for info. on water body/boat/motor restrictions: (603) 293-2037 www.nh.gov/safety

Public Water Access site

 Canoe/cartop


 Shorebank


 Ramp

 Bathymetric contour (feet)


Bathymetry provided by the NH Department of Environmental Services, Watershed Mgt Bureau


 Town boundary


 Primary Route


 Road or Street

 Trail or other

 Stream or Shoreline

 Surface Water

 Wetland

 Conservation or Public land

 Cleared

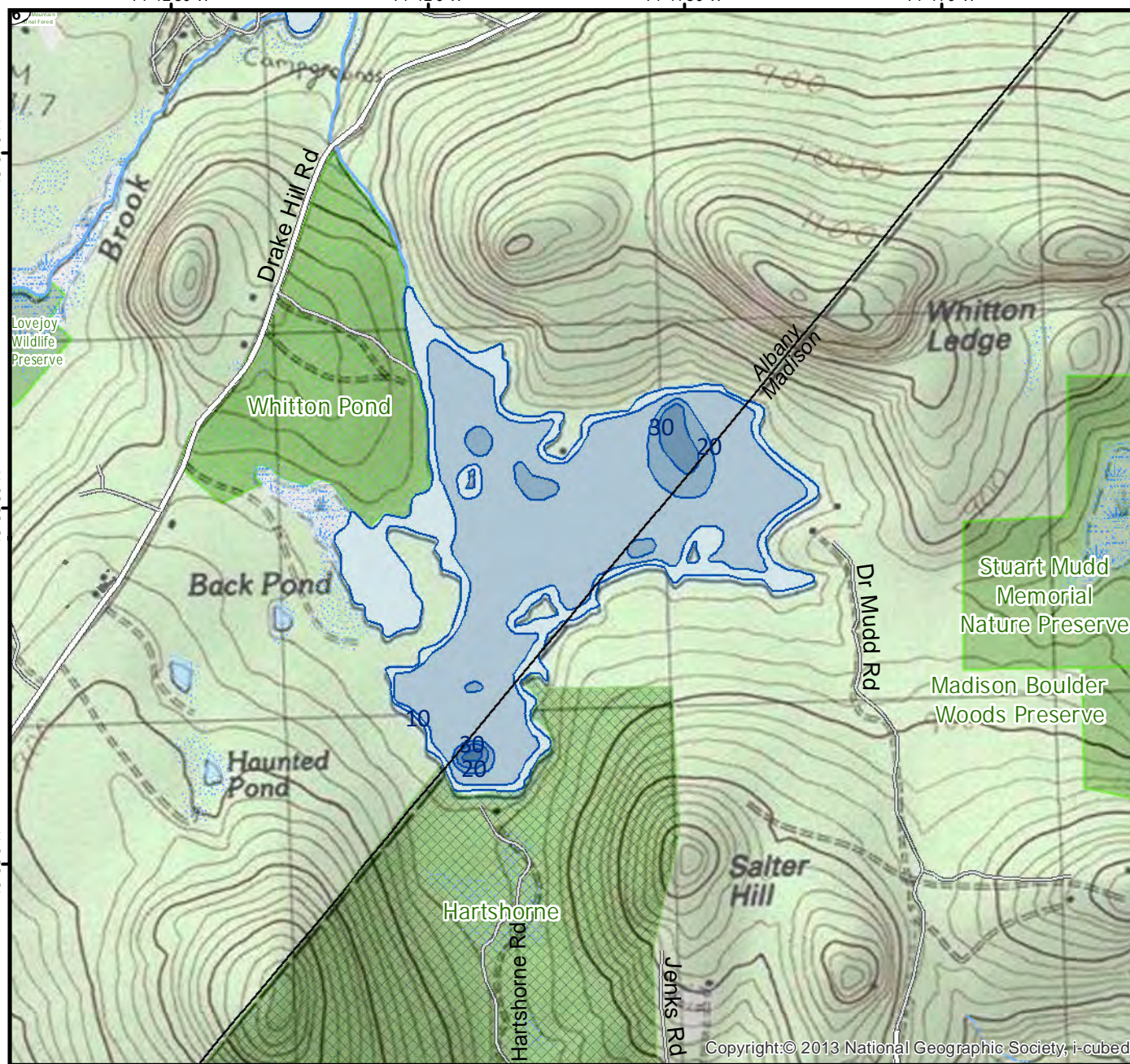
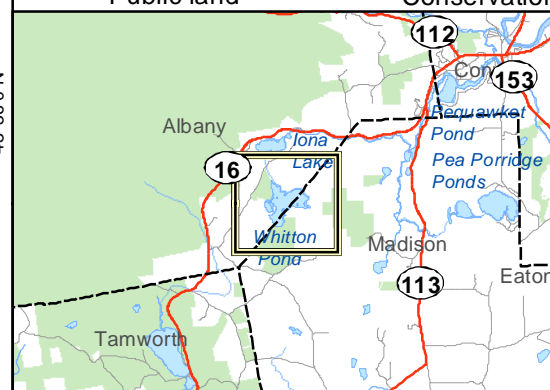
 Forest

 Contour

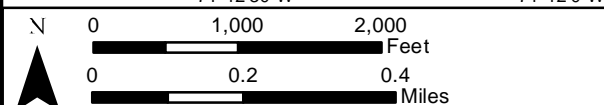
 Building

Source: USGS

 Restricted Access Conservation



71°12'30"W 71°12'0"W 71°11'30"W 71°11'0"W



Base map data from NH GRANIT at Earth Systems Research Center (UNH) and Open Street Map contributors. UNH, NH Fish & Game and the cooperating agencies make no claim as to the validity or reliability or to any implied uses of these data. NOT INTENDED FOR BOAT NAVIGATION.

Directions: