

For fishing regulation information, please refer to the NHFGD Freshwater Fishing Digest.

Contact: NHFGD Region 2 (Lakes Region), New Hampton  
E-mail: [reg2@wildlife.nh.gov](mailto:reg2@wildlife.nh.gov) Phone: 603-744-5470

## WHITE OAK POND Holderness

**FISHERY:** Warmwater **ACRES:** 295

**TROPIC LEVEL:** MESO

**AVG. DEPTH:** 13 **MAX. DEPTH:** 35

**SPECIES:** ECP,BBH,WP,YP,CSF

ADDITIONAL INFO: 7.5 HP limit

ACCESS: Town cartop launch, limited

Please contact NH Dept of Safety, Marine Patrol for info. on water body/boat/motor restrictions: (603) 293-2037 [www.nh.gov/safety](http://www.nh.gov/safety)

### Public Water Access site

 Canoe/cartop


 Shorebank


 Ramp

 Bathymetric contour (feet)


Bathymetry provided by the NH Department of Environmental Services, Watershed Mgt Bureau


 Town boundary


 Primary Route


 Road or Street

 Trail or other

 Stream or Shoreline

 Surface Water

 Wetland

 Conservation or Public land

 Cleared


 Forest

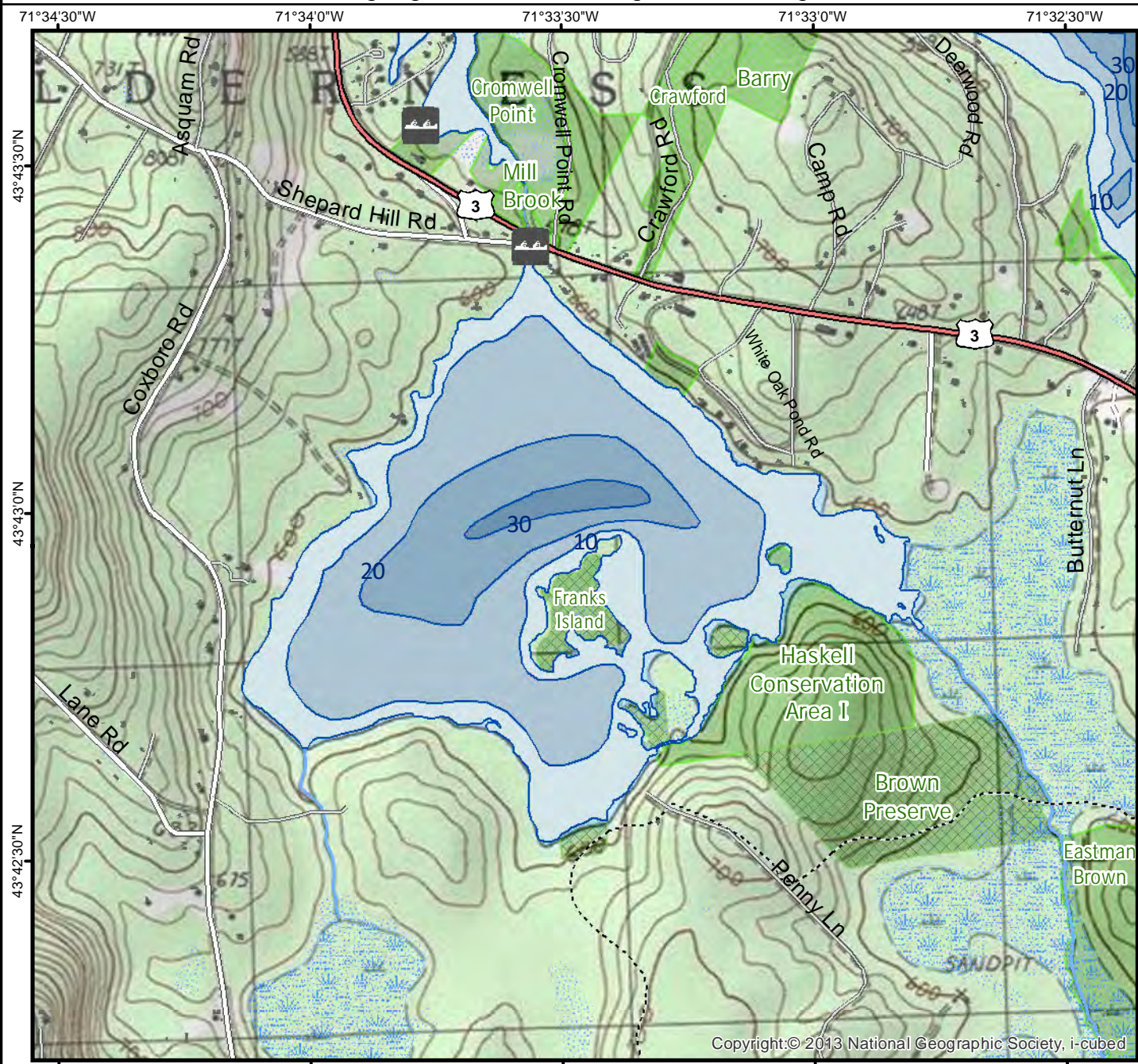
 Contour

 Building

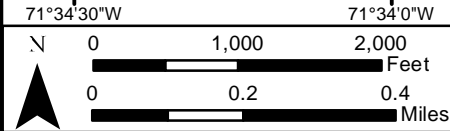
Source: USGS

 Restricted Access

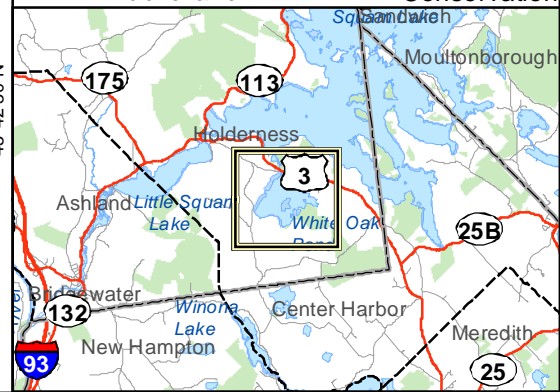
 Conservation



Copyright:© 2013 National Geographic Society, i-cubed



Base map data from NH GRANIT at Earth Systems Research Center (UNH) and Open Street Map contributors. UNH, NH Fish & Game and the cooperating agencies make no claim as to the validity or reliability or to any implied uses of these data. NOT INTENDED FOR BOAT NAVIGATION.



Directions: Rt 3/25 at College Rd N