

For fishing regulation information, please refer to the NHFGD Freshwater Fishing Digest.

Contact: NHFGD Region 2 (Lakes Region), New Hampton  
E-mail: reg2@wildlife.nh.gov Phone: 603-744-5470

# SUNAPEE LAKE Sunapee, Newbury, New London

**FISHERY:** Cold/Warm    **ACRES:** 4125

**TROPIC LEVEL:** OLIGO

**AVG. DEPTH:** 37    **MAX. DEPTH:** 105

**SPECIES:** LLS,LT,SMB,LMB,ECP,  
BBH,RB,BRB

**ADDITIONAL INFO:** lake trout and/or salmon lake; boat/other restrictions

**ACCESS:** Sunapee State Park; Sunapee Harbor; other sites

Please contact NH Dept of Safety, Marine Patrol for info. on water body/boat/motor restrictions.

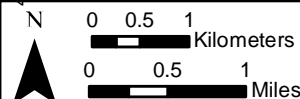
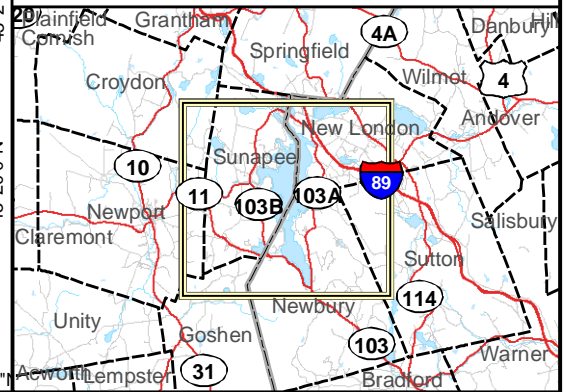
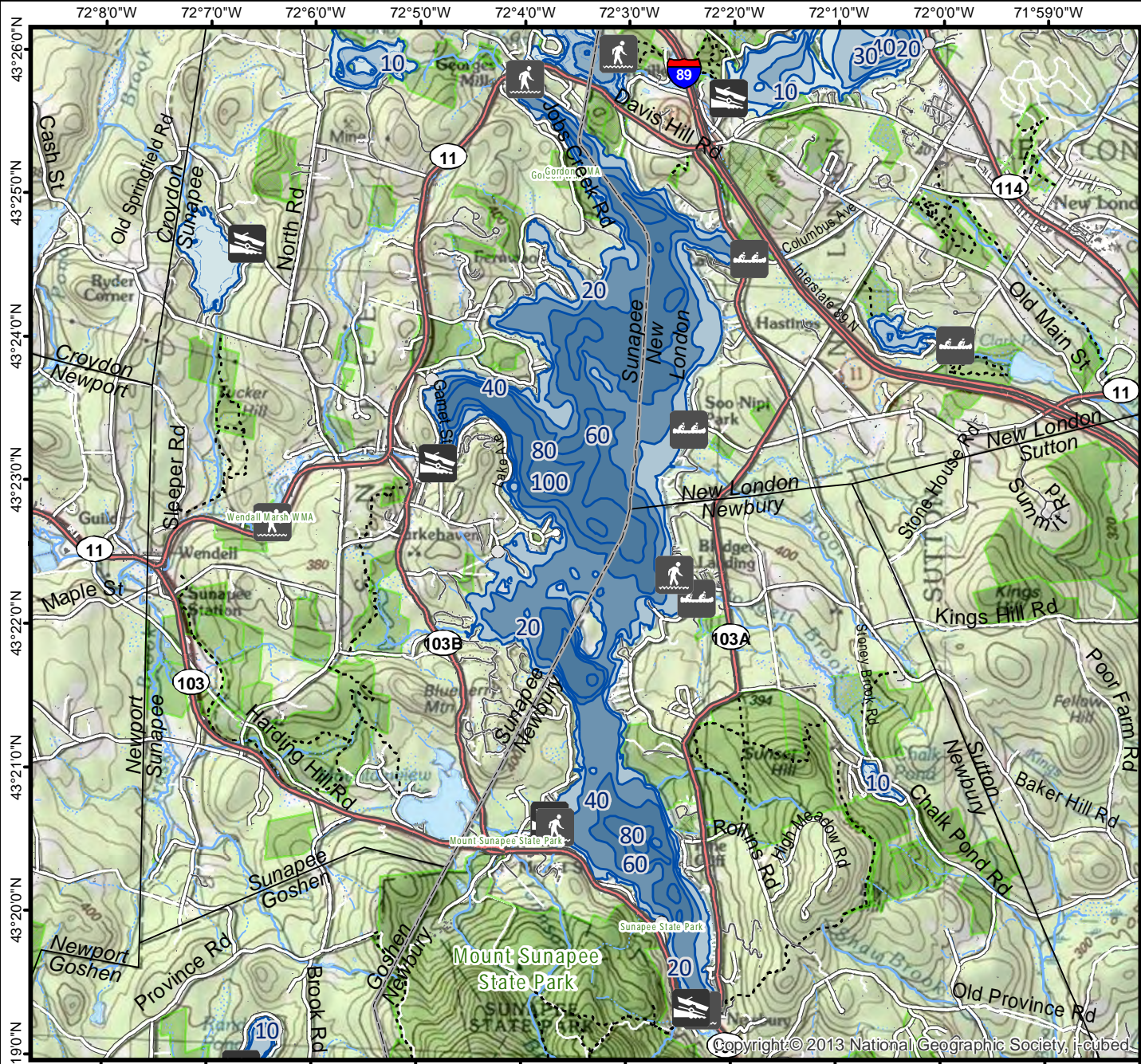
### Public Water Access site

- Canoe/cartop
- Shorebank
- Ramp

Bathymetric contour (feet)

Bathymetry provided by the NH Department of Environmental Services, Watershed Mgt Bureau

- Town boundary
  - Primary Route
  - Road or Street
  - Trail or other
  - Stream or Shoreline
  - Surface Water
  - Wetland
  - Conservation or Public land
  - Cleared Forest
  - Contour
  - Building
  - Restricted Access Conservation
- Source: USGS



Base map data from NH GRANIT at Earth Systems Research Center (UNH) and Open Street Map contributors. UNH, NH Fish & Game and the cooperating agencies make no claim as to the validity or reliability or to any implied uses of these data. NOT INTENDED FOR BOAT NAVIGATION.

**Directions:** off Rt 103 traffic circle