

For fishing regulation information, please refer to the NHFGD Freshwater Fishing Digest.

Contact: NHFGD Region 1 (North Country), Lancaster  
E-mail: [reg1@wildlife.nh.gov](mailto:reg1@wildlife.nh.gov) Phone: 603-788-3164

## SCOTT BOG Pittsburg

**FISHERY:** Coldwater **ACRES:** 88

**TROPIC LEVEL:** EUTRO

**AVG. DEPTH:** 0 **MAX. DEPTH:** 0

**SPECIES:** EBT

**ADDITIONAL INFO:** trout pond, fly-fishing only; no motors

**ACCESS:** cartop; private road subject to closure

Please contact NH Dept of Safety, Marine Patrol for info. on water body/boat/motor restrictions: (603) 293-2037 [www.nh.gov/safety](http://www.nh.gov/safety)

### Public Water Access site

 Canoe/cartop

 Shorebank

 Ramp


 Bathymetric contour (feet)

Bathymetry provided by the NH Department of Environmental Services, Watershed Mgt Bureau

 Town boundary

 Primary Route

 Road or Street

 Trail or other

 Stream or Shoreline

 Surface Water

 Wetland

 Conservation or Public land

 Cleared

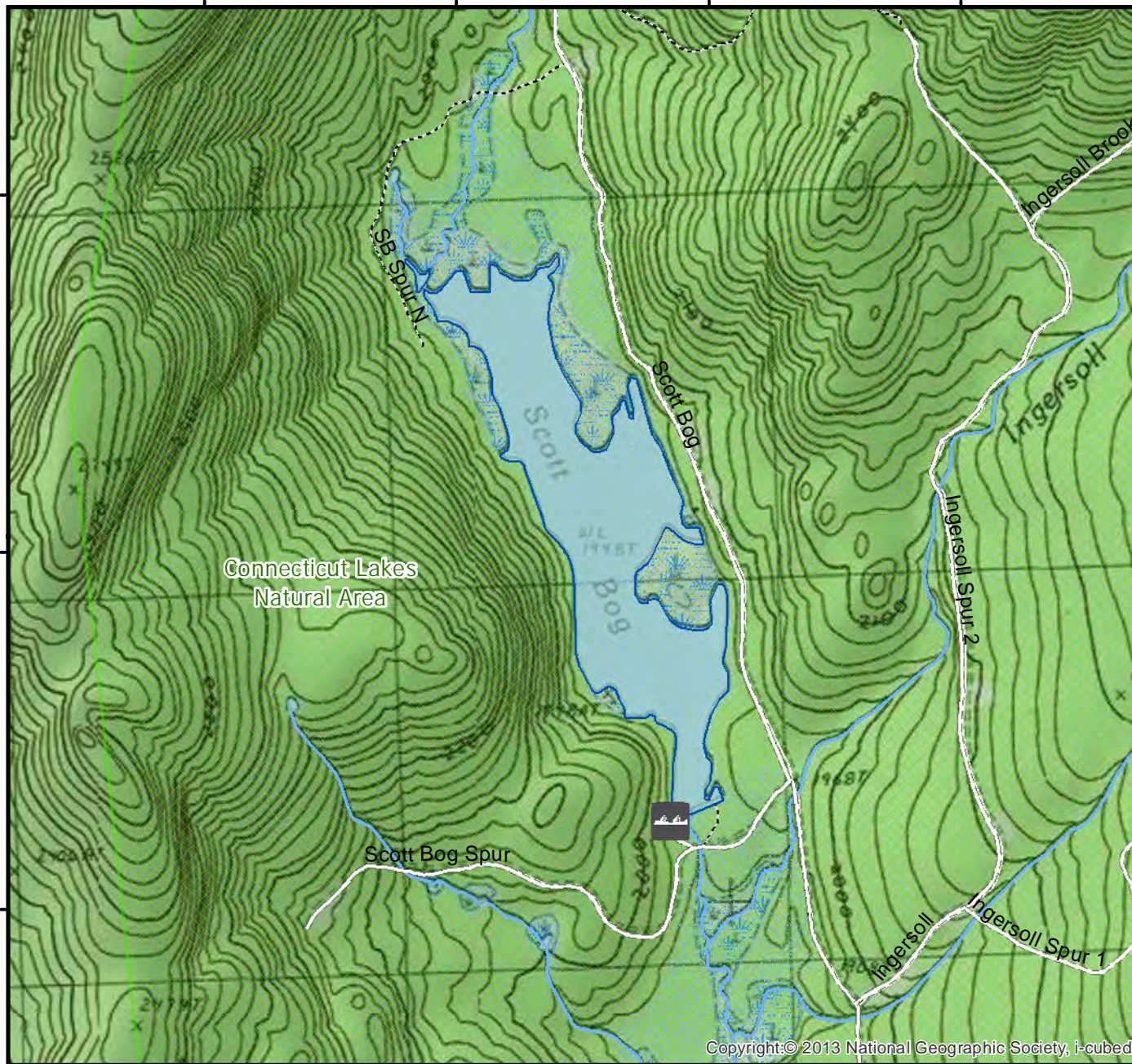
 Forest

 Contour

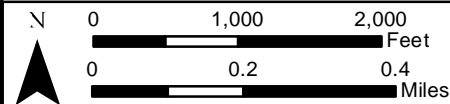
 Building

Source: USGS

 Restricted Access Conservation



Copyright:© 2013 National Geographic Society, i-cubed



Base map data from NH GRANIT at Earth Systems Research Center (UNH) and Open Street Map contributors. UNH, NH Fish & Game and the cooperating agencies make no claim as to the validity or reliability or to any implied uses of these data. NOT INTENDED FOR BOAT NAVIGATION.

**Directions:** Rt 3, L at 3 mi marker, 0.2 mi, cross bridge, Right