

For fishing regulation information, please refer to the NHFGD Freshwater Fishing Digest.

Contact: NHFGD Region 4 (Southwest NH), Keene  
E-mail: [reg4@wildlife.nh.gov](mailto:reg4@wildlife.nh.gov) Phone: 603-352-9669

## PURGATORY POND Dunbarton

**FISHERY:** Warmwater **ACRES:** 19

**TROPIC LEVEL:** EUTRO

**AVG. DEPTH:** 7 **MAX. DEPTH:** 15

**SPECIES:** BC

ADDITIONAL INFO:

ACCESS: boat launch, unimproved

Please contact NH Dept of Safety, Marine Patrol for info. on water body/boat/motor restrictions: (603) 293-2037 [www.nh.gov/safety](http://www.nh.gov/safety)

### Public Water Access site


 Canoe/cartop

 Shorebank


 Ramp

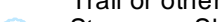
 Bathymetric contour (feet)

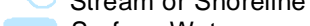
Bathymetry provided by the NH Department of Environmental Services, Watershed Mgt Bureau

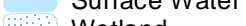
 Town boundary

 Primary Route


 Road or Street

 Trail or other

 Stream or Shoreline

 Surface Water

 Wetland

 Conservation or Public land

 Cleared

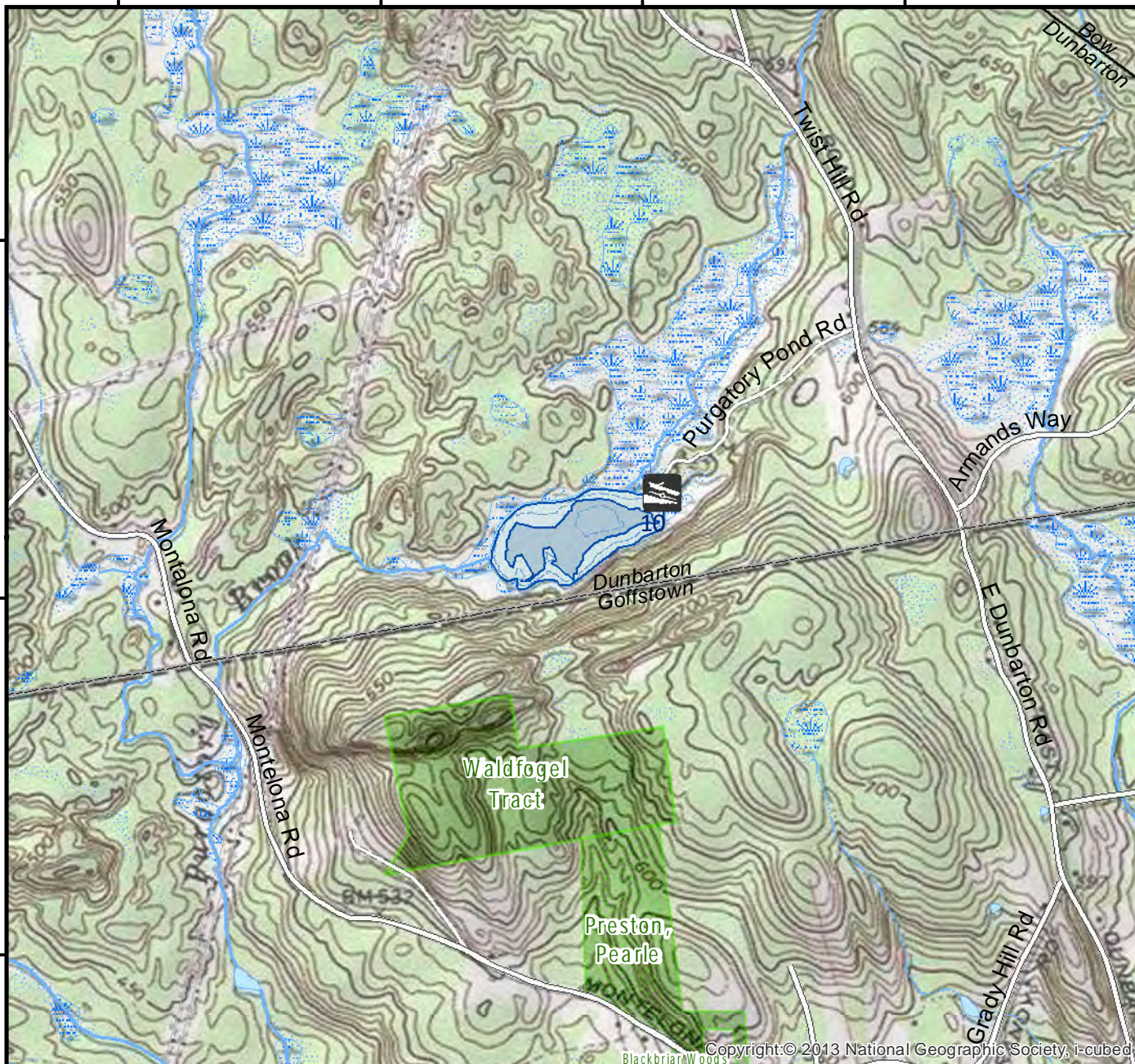
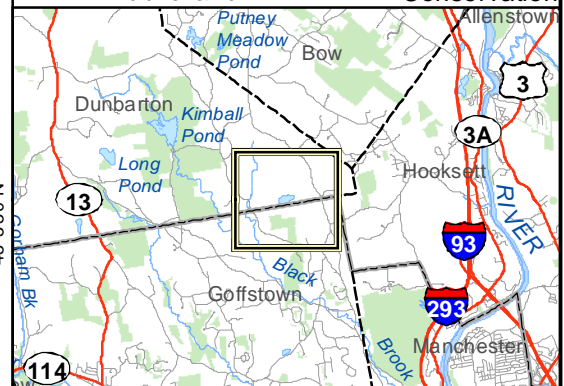
 Forest

 Contour

 Building

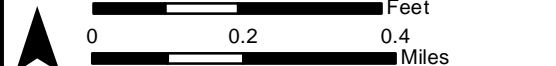
Source: USGS

 Restricted Access Conservation



71°33'0"W 71°32'30"W 71°32'0"W 71°31'30"W

43°4'30"N 43°4'0"N 43°3'30"N



Base map data from NH GRANIT at Earth Systems Research Center (UNH) and Open Street Map contributors. UNH, NH Fish & Game and the cooperating agencies make no claim as to the validity or reliability or to any implied uses of these data. NOT INTENDED FOR BOAT NAVIGATION.

Directions: Twist Hill Rd near Goffstown town line, to Purgatory\*