

For fishing regulation information, please refer to the NHFGD Freshwater Fishing Digest.

Contact: NHFGD Region 1 (North Country), Lancaster
E-mail: reg1@wildlife.nh.gov Phone: 603-788-3164

BLOOD POND Lancaster

FISHERY: ACRES: 20

TROPIC LEVEL: MESO

AVG. DEPTH: 5 **MAX. DEPTH:** 20


SPECIES:

ADDITIONAL INFO:

ACCESS: No public boat access

Please contact NH Dept of Safety, Marine Patrol for info. on water body/boat/motor restrictions: (603) 293-2037 www.nh.gov/safety

Public Water Access site

 Canoe/cartop


 Shorebank

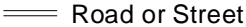
 Ramp

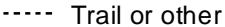
 Bathymetric contour (feet)

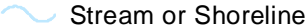
Bathymetry provided by the NH Department of Environmental Services, Watershed Mgt Bureau


 Town boundary

 Primary Route

 Road or Street

 Trail or other

 Stream or Shoreline

 Surface Water

 Wetland

 Conservation or Public land

 Cleared

 Forest

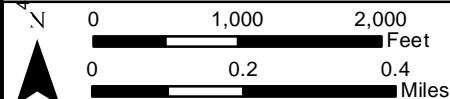
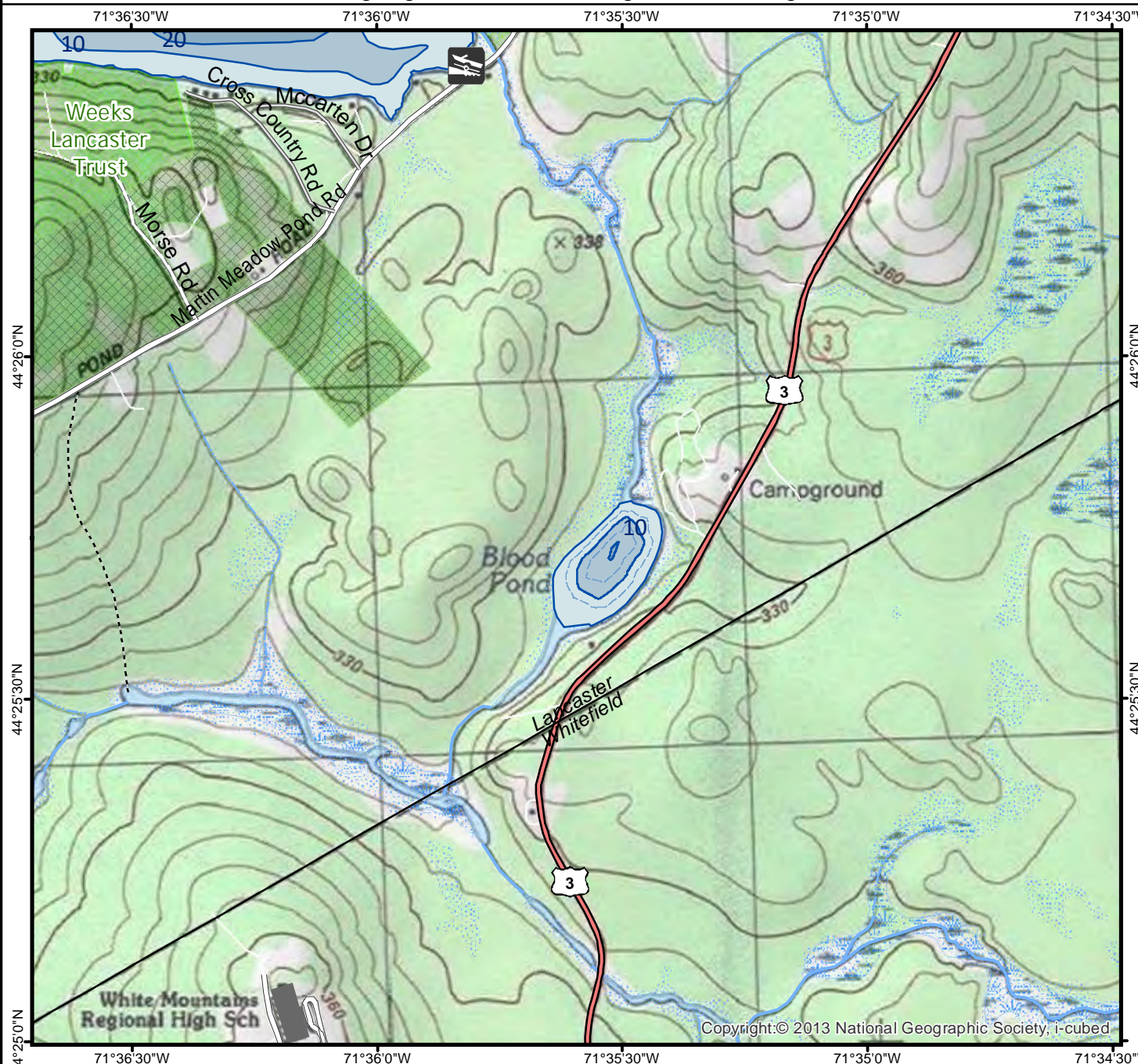
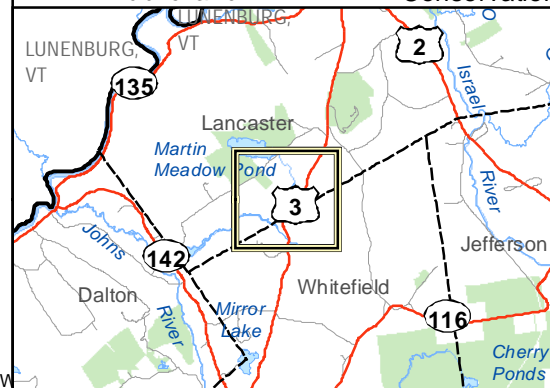
 Contour

 Building

Source: USGS

 Restricted Access Conservation

 Conservation



Base map data from NH GRANIT at Earth Systems Research Center (UNH) and Open Street Map contributors. UNH, NH Fish & Game and the cooperating agencies make no claim as to the validity or reliability or to any implied uses of these data. NOT INTENDED FOR BOAT NAVIGATION.

Directions: