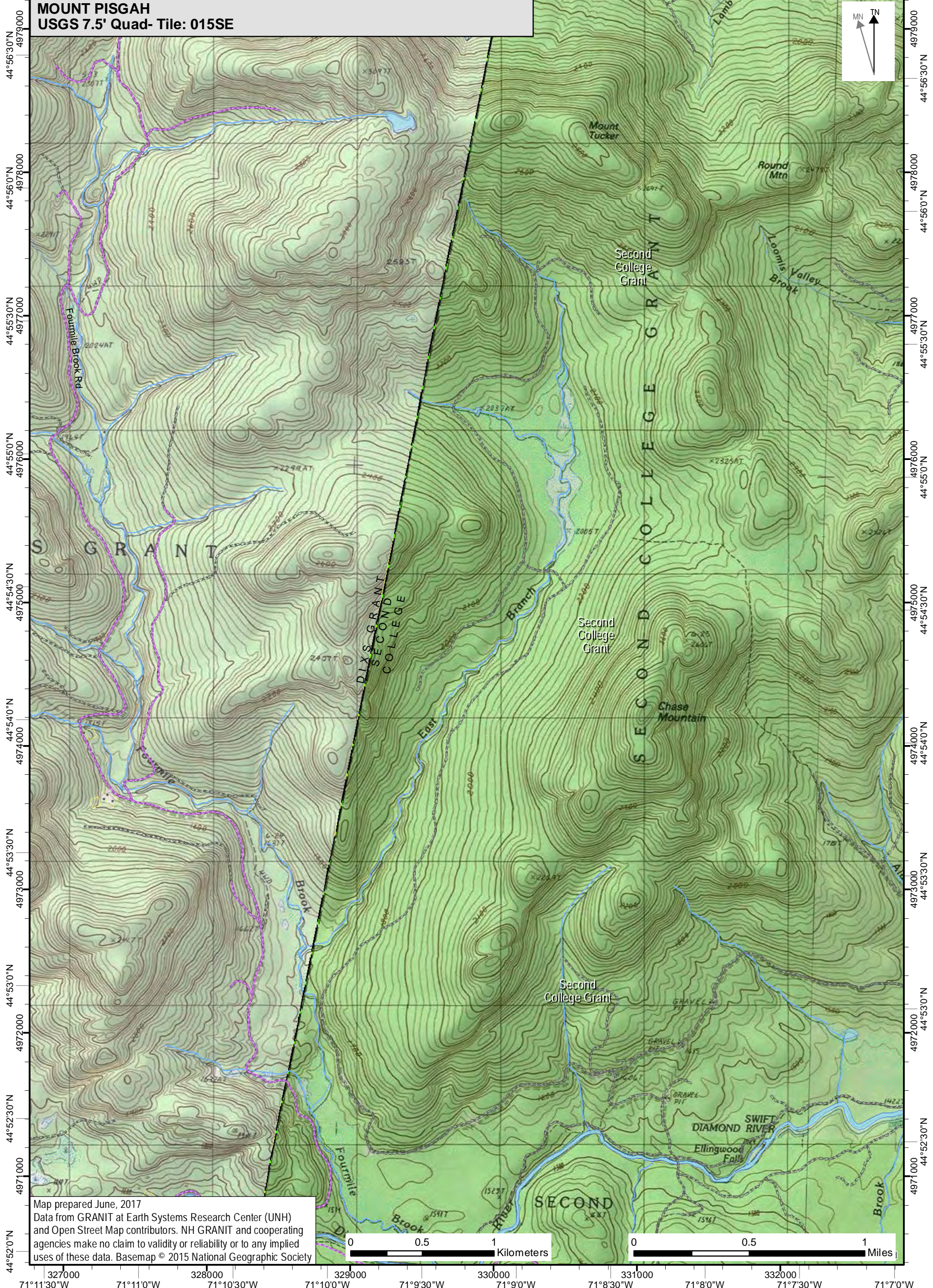
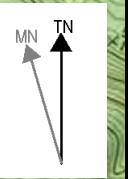


71°11'30"W 71°11'0"W 71°10'30"W 71°10'0"W 71°9'30"W 71°9'0"W 71°8'30"W 71°8'0"W 71°7'30"W
327000 328000 329000 330000 331000 332000

MOUNT PISGAH
USGS 7.5' Quad- Tile: 015SE



Map prepared June, 2017
Data from GRANIT at Earth Systems Research Center (UNH)
and Open Street Map contributors. NH GRANIT and cooperating
agencies make no claim to validity or reliability or to any implied
uses of these data. Basemap © 2015 National Geographic Society

0 0.5 1 Kilometers

0 0.5 1 Miles

71°11'30"W 71°11'0"W 71°10'30"W 71°10'0"W 71°9'30"W 71°9'0"W 71°8'30"W 71°8'0"W 71°7'30"W 71°7'0"W
44°52'0"N 44°52'30"N 44°53'0"N 44°53'30"N 44°54'0"N 44°54'30"N 44°55'0"N 44°55'30"N 44°56'0"N 44°56'30"N
4971000 4972000 4973000 4974000 4975000 4976000 4977000 4978000 4979000