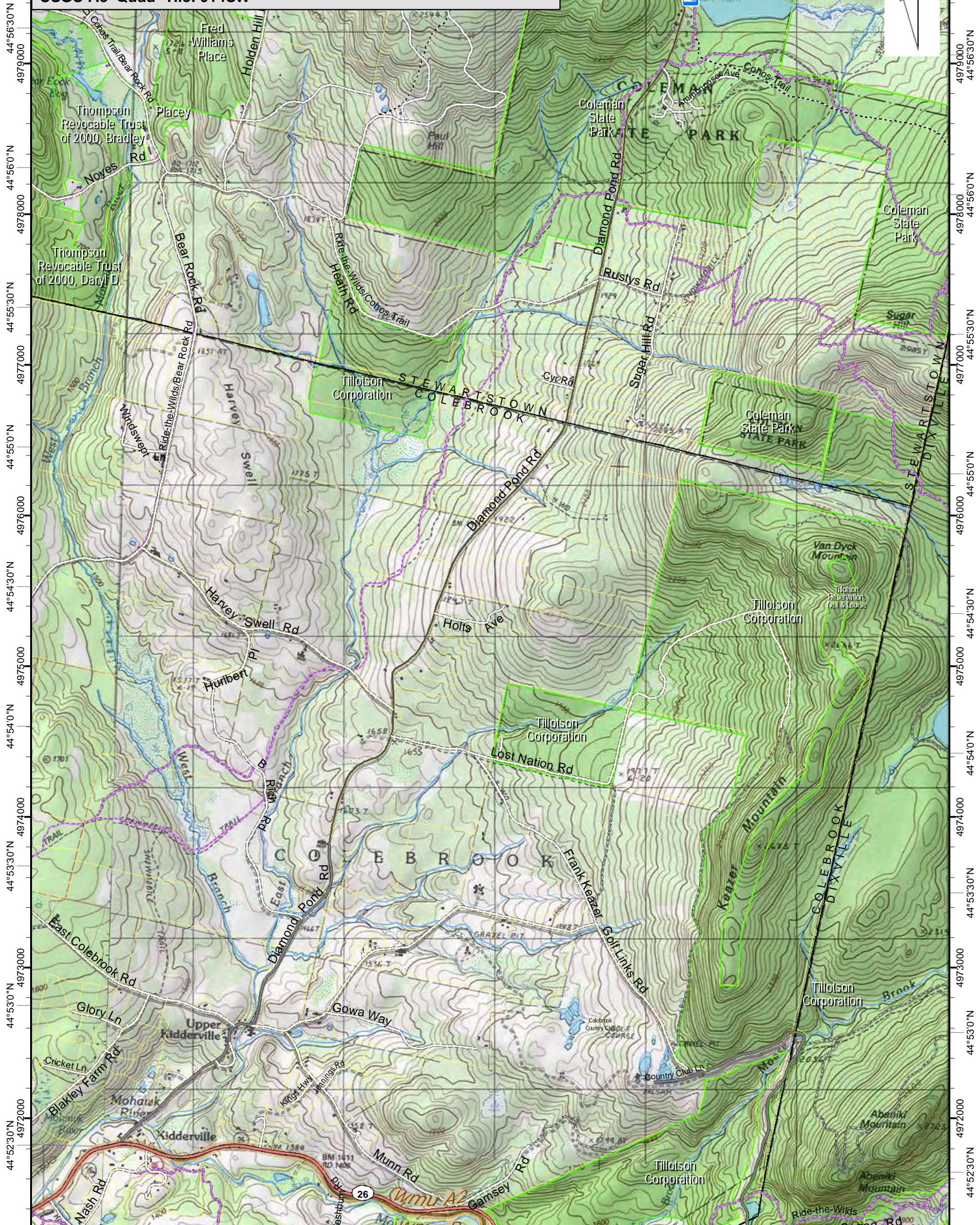


71°23'0"W 71°22'30"W 71°22'0"W 71°21'30"W 71°21'0"W 71°20'30"W 71°20'0"W 71°19'30"W 71°19'0"W 71°18'30"W
312000 313000 314000 315000 316000 317000 318000

DIAMOND POND
USGS 7.5' Quad- Tile: 014SW



Map prepared June, 2017
Data from GRANIT at Earth Systems Research Center (UNH)
and Open Street Map contributors. NH GRANIT and cooperating
agencies make no claim to validity or reliability or to any implied
uses of these data. Basemap © 2015 National Geographic Society



44°52'0"N 44°52'30"N 44°53'0"N 44°53'30"N 44°54'0"N 44°54'30"N 44°55'0"N 44°55'30"N 44°56'0"N 44°56'30"N
312000 313000 314000 315000 316000 317000 318000
71°22'30"W 71°22'0"W 71°21'30"W 71°21'0"W 71°20'30"W 71°20'0"W 71°19'30"W 71°19'0"W 71°18'30"W