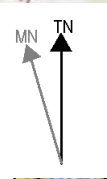


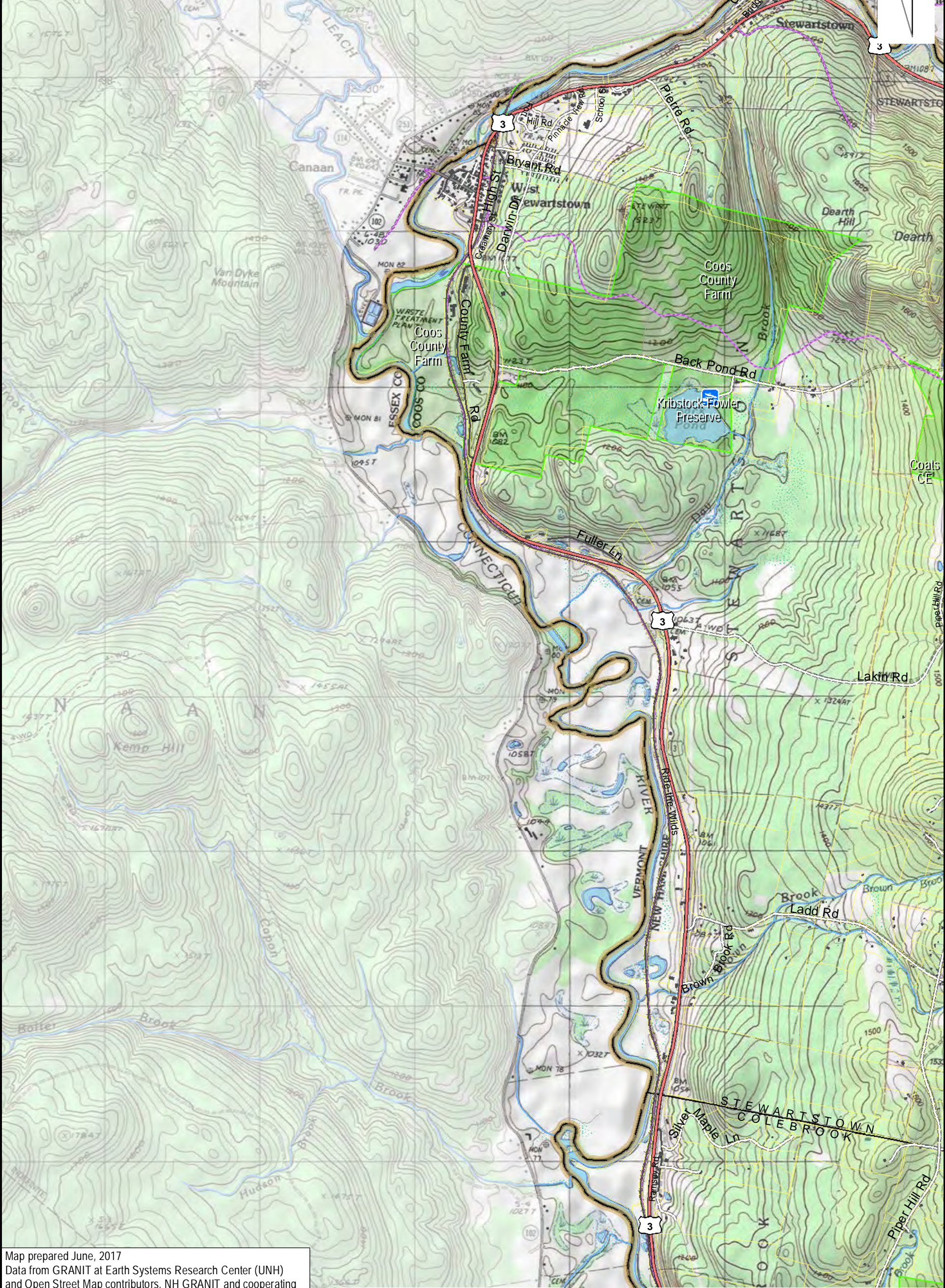
71°34'0"W 298000 71°33'30"W 299000 71°33'0"W 299000 71°32'30"W 300000 71°32'0"W 301000 71°31'30"W 301000 71°31'0"W 302000 71°30'30"W 303000 71°30'0"W 303000

MONADNOCK, VT/COLEBROOK
USGS 7.5' Quad- Tile: 012NE



4987000
45°0'0"N
4986000
45°0'0"N
44°59'30"N
4985000
44°59'0"N
4984000
44°58'30"N
4983000
44°58'0"N
4982000
44°57'30"N
4981000
44°57'0"N
4980000
44°56'30"N
4979000
44°56'0"N

4987000
45°0'0"N
4986000
45°0'0"N
4985000
44°59'30"N
4984000
44°59'0"N
4983000
44°58'30"N
4982000
44°58'0"N
4981000
44°57'30"N
4980000
44°57'0"N
4979000
44°56'30"N
4978000
44°56'0"N



Map prepared June, 2017
Data from GRANIT at Earth Systems Research Center (UNH)
and Open Street Map contributors. NH GRANIT and cooperating
agencies make no claim to validity or reliability or to any implied
uses of these data. Basemap © 2015 National Geographic Society

0 0.5 1 Kilometers

0 0.5 1 Miles

71°34'0"W 298000 71°33'30"W 299000 71°33'0"W 299000 71°32'30"W 300000 71°32'0"W 301000 71°31'30"W 301000 71°31'0"W 302000 71°30'30"W 303000 71°30'0"W 303000 71°29'30"W