

For fishing regulation information, please refer to the NHFGD Freshwater Fishing Digest.

Contact: NHFGD Region 2 (Lakes Region), New Hampton
E-mail: reg2@wildlife.nh.gov Phone: 603-744-5470

SUNAPEE LAKE, LITTLE New London

FISHERY: Warmwater **ACRES:** 486

TROPIC LEVEL: MESO

AVG. DEPTH: 14 **MAX. DEPTH:** 43

SPECIES: RT,SMB,ECP,BBH

ADDITIONAL INFO:

ACCESS: Northwest Bay

Please contact Little NH Dept of Safety, Marine Patrol for info. on water body/boat/motor restrictions: (603) 293-2037 www.nh.gov/safety

Public Water Access site

Canoe/cartop

Shorebank

Ramp

Bathymetric contour (feet)

Bathymetry provided by the NH Department of Environmental Services, Watershed Mgt Bureau

Town boundary

Primary Route

Road or Street

Trail or other

Stream or Shoreline

Surface Water

Wetland

Conservation or Public land

Cleared

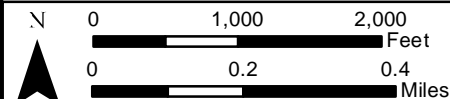
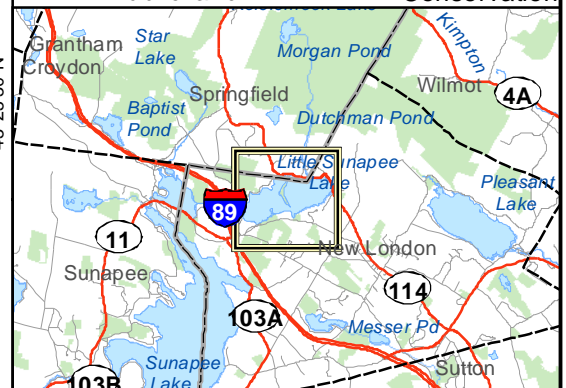
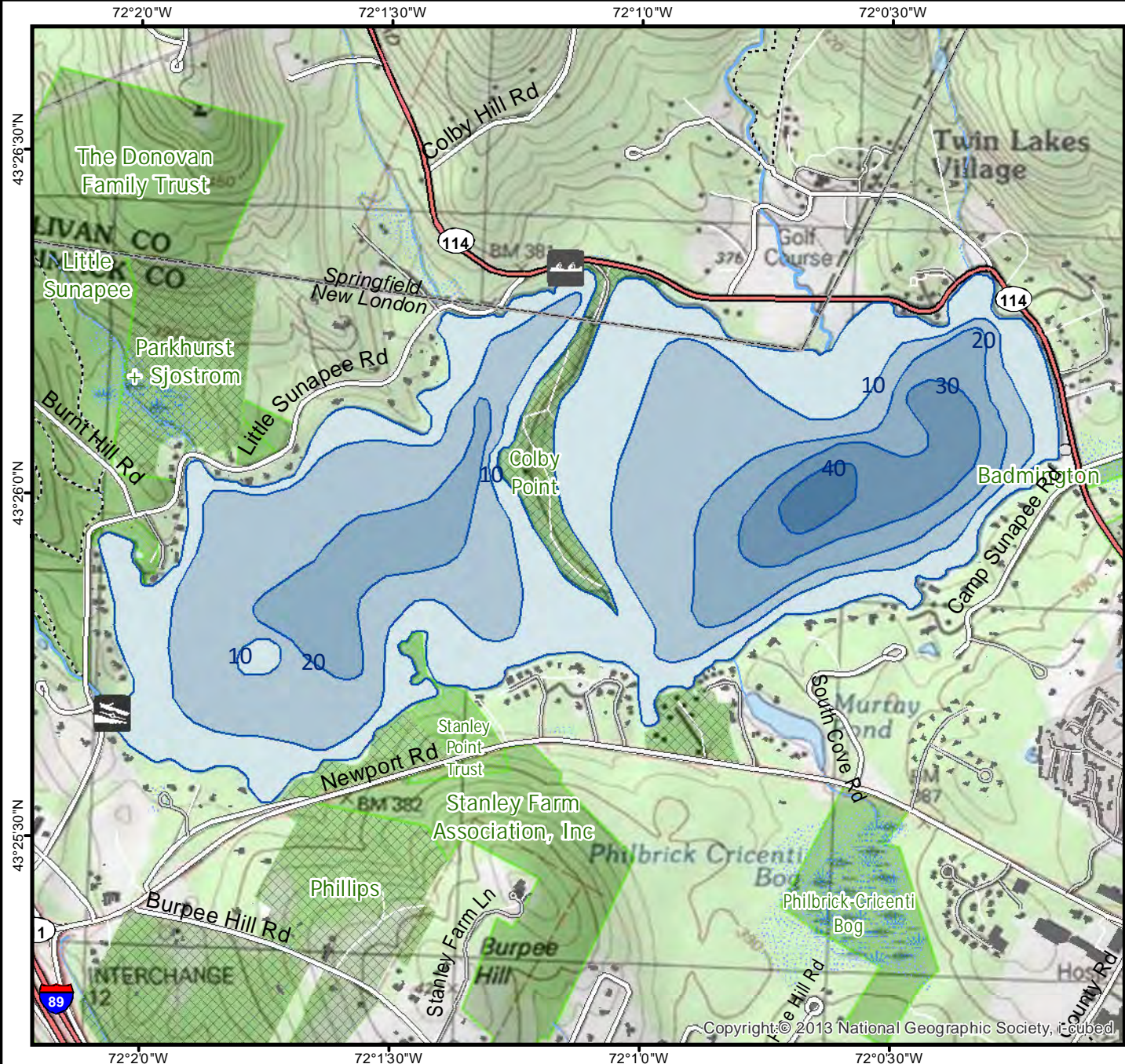
Forest

Contour

Building

Source: USGS

Restricted Access Conservation



Base map data from NH GRANIT at Earth Systems Research Center (UNH) and Open Street Map contributors. UNH, NH Fish & Game and the cooperating agencies make no claim as to the validity or reliability or to any implied uses of these data. NOT INTENDED FOR BOAT NAVIGATION.

Directions: Rt 114