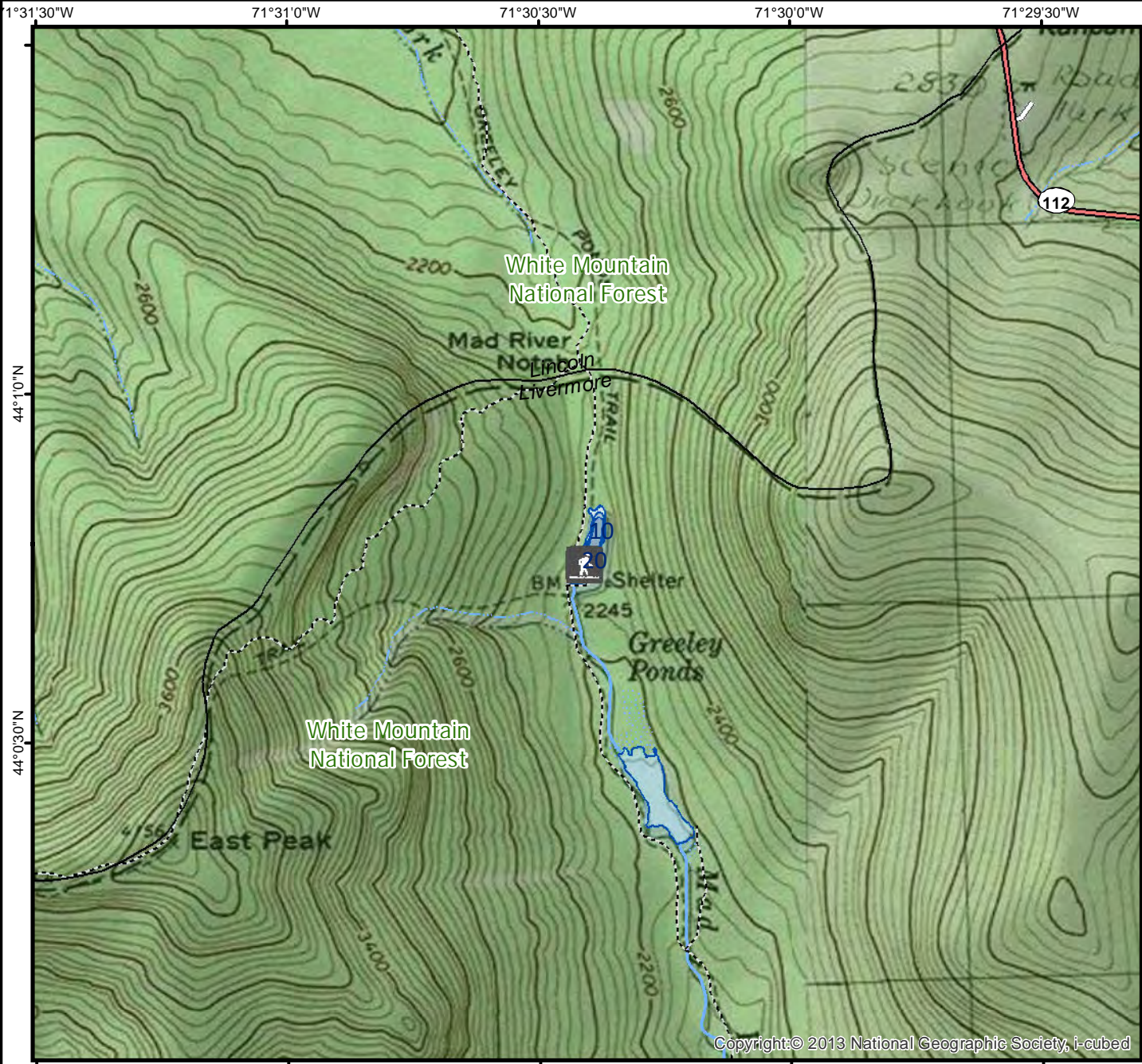


For fishing regulation information, please refer to the NHFGD Freshwater Fishing Digest.

Contact: NHFGD Region 2 (Lakes Region), New Hampton  
E-mail: [reg2@wildlife.nh.gov](mailto:reg2@wildlife.nh.gov) Phone: 603-744-5470

## GREELEY POND, UPPER Livermore



<b>FISHERY:</b> Coldwater	<b>ACRES:</b> 2
<b>TROPIC LEVEL:</b> OLIGO	
<b>AVG. DEPTH:</b> 16	<b>MAX. DEPTH:</b> 25
<b>SPECIES:</b> EBT	

ADDITIONAL INFO: no motors

ACCESS: remote walk-in

Please contact NH Dept of Safety, Marine Patrol for info. on water body/boat/motor restrictions: (603) 293-2037 [www.nh.gov/safety](http://www.nh.gov/safety)

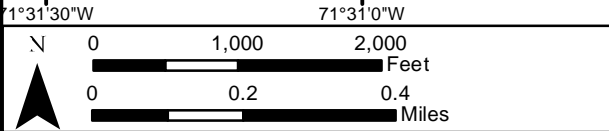
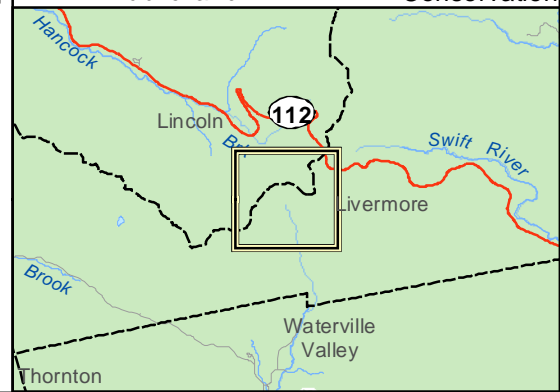
**Public Water Access site**

- Canoe/cartop
- Shorebank
- Ramp
- Bathymetric contour (feet)

Bathymetry provided by the NH Department of Environmental Services, Watershed Mgt Bureau

- Town boundary
- Primary Route
- Road or Street
- Trail or other
- Stream or Shoreline
- Surface Water
- Wetland
- Conservation or Public land
- Cleared Forest
- Contour
- Building
- Restricted Access Conservation

Source: USGS



Base map data from NH GRANIT at Earth Systems Research Center (UNH) and Open Street Map contributors. UNH, NH Fish & Game and the cooperating agencies make no claim as to the validity or reliability or to any implied uses of these data. NOT INTENDED FOR BOAT NAVIGATION.

Directions: Rt 112 Kancamagus Hwy