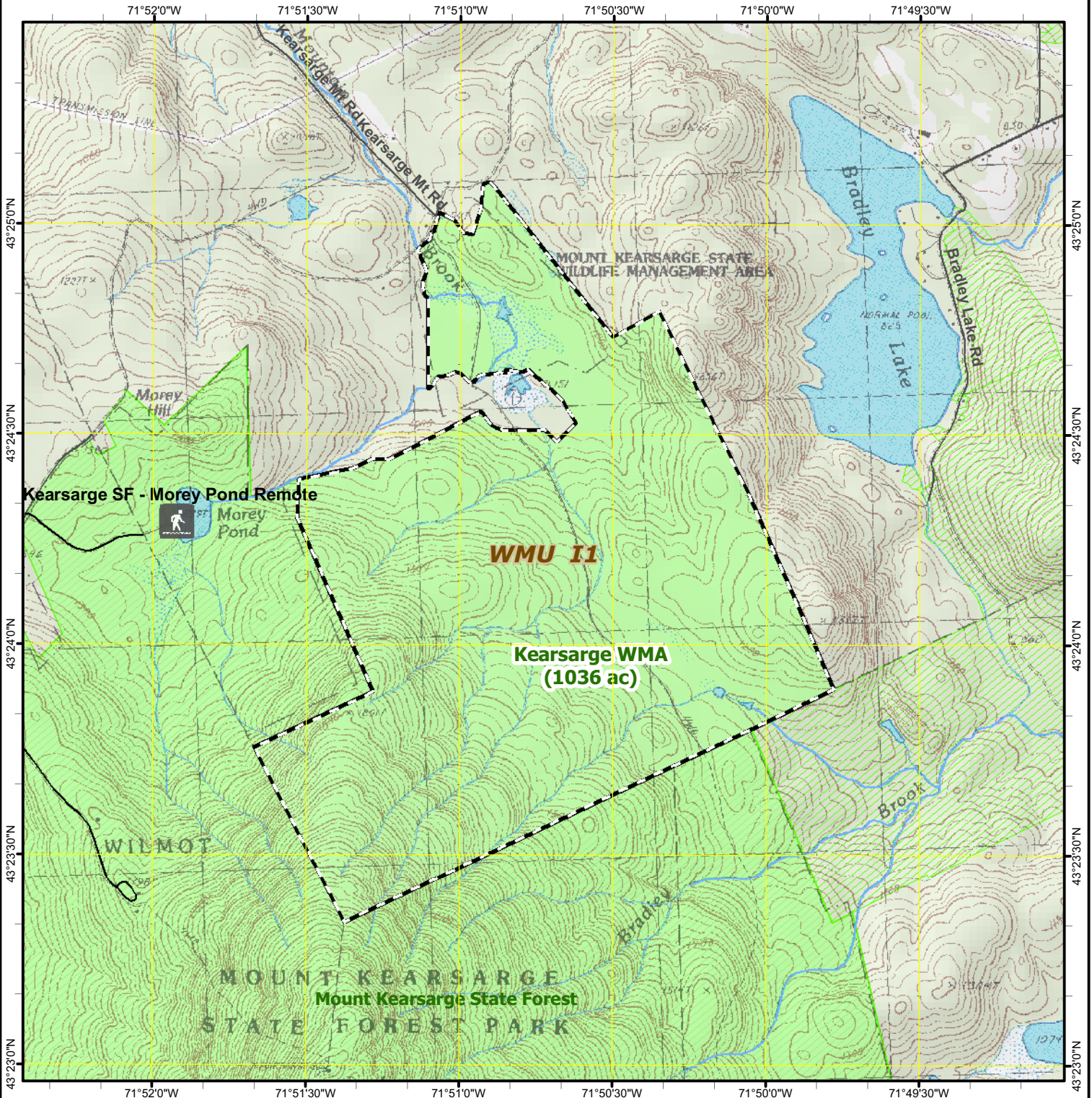




NH Fish and Game Department Wildlife Management Areas

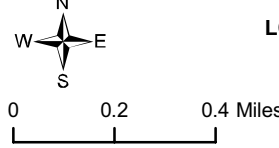
Kearsarge WMA (town: Andover, wmu: I1)



Not all conservation land is open to hunting and NHFGD highly recommends that each hunter personally contact landowners whenever possible and seek permission to hunt.

For further information, please contact:
 NH Fish and Game Department, Wildlife Division
 11 Hazen Dr, Concord NH 03301-6500
 603-271-2461 Email: wildlife@wildlife.nh.gov

Most data presented on this map represent stock data sets obtained from NH GRANIT, at Complex Systems Research Center, UNH. CSRC, under contract to the NH Office of Energy and Planning (OEP), and in consultation with cooperating agencies, maintains a continuing program to identify and correct errors in these data. OEP, CSRC, NHFGD and the cooperating agencies make no claim as to the validity or reliability or to any implied uses of these data.



- NH Fish and Game Department Wildlife Management Area - approximate boundary
- Parcel for which NH Fish and Game or NH Dept of Resources and Economic Dev. is the primary protecting agency.
- Conservation Land (access may be Restricted)
- Stream or Shoreline
- Wetland
- Surface Water
- Wildlife Mgt. Unit boundary
- Primary route
- Road or Street
- Town Boundary