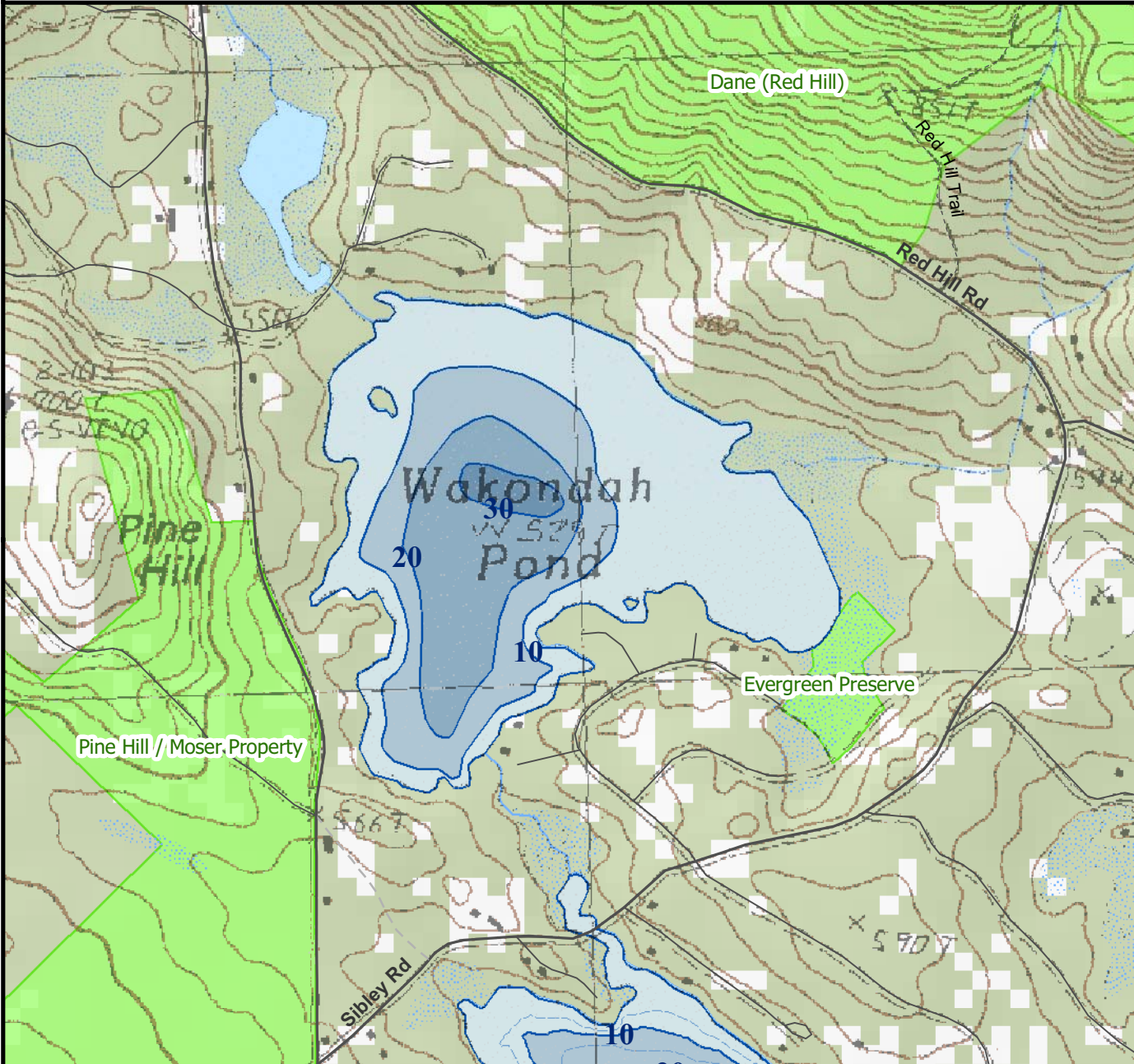


For regulation information, please refer to the NHFGD Freshwater Fishing Digest.

Contact: NHFGD Region 2 (Lakes Region), New Hampton
E-mail: reg2@wildlife.nh.gov Phone: 603-744-5470

WAKONDAH POND Moultonborough



FISHERY: Warmwater ACRES: 92
TROPHIC LEVEL: MESO
AVG DEPTH: 11 MAX DEPTH: 39
SPECIES: LMB,SMB,ECP,YP,WP,SF,BBH

ADDITIONAL INFO: no gas motors

ACCESS: No public access

Contact NH Dept of Safety, Marine Patrol Bureau for information regarding waterbody restrictions (603) 293-0091

Public Water Access site (State, Federal, or Road-to-Public-Water)

Canoe/cartop

Shorebank

Ramp

Bathymetric contour (feet)

Bathymetry provided by the NH Department of Environmental Services, Watershed Mgt Bureau

Town boundary

Primary Route

Road or Street

Trail or other

Stream or Shoreline

Surface Water

Wetland

Conservation Land

Cleared

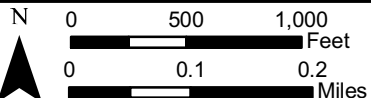
Forest

Contour

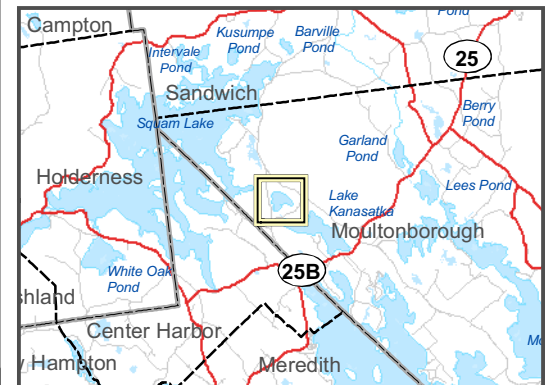
Building

Source: USGS

Restricted Access Conservation



Most data presented on this map represent stock data sets obtained from NH GRANIT, Complex Systems Research Center, UNH. CSRC, NHOEP, NHFGD and the cooperating agencies make no claim as to the validity or reliability or to any implied uses of these data. NOT FOR NAVIGATION.



Directions: Bean Rd