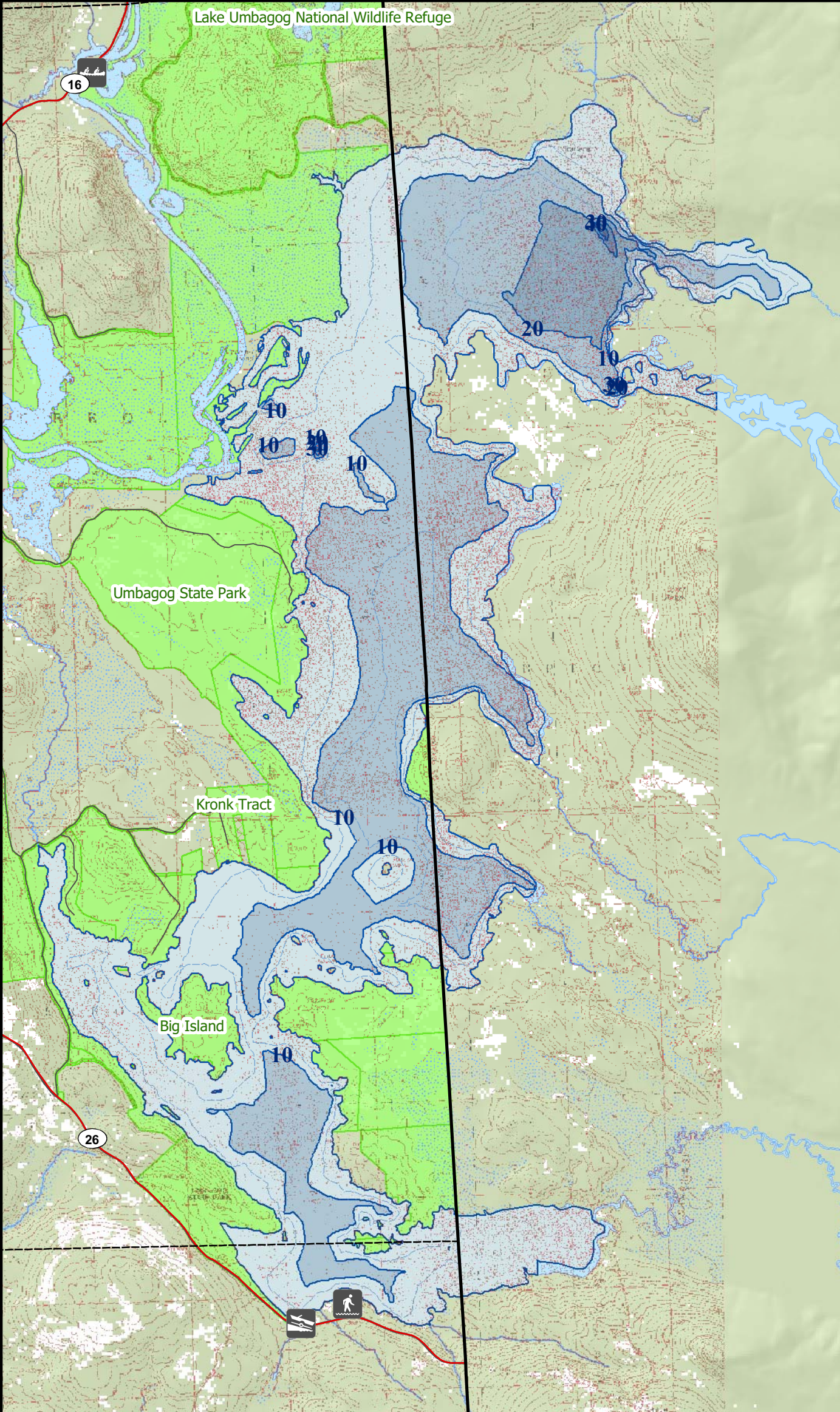


For regulation information, please refer to the NHFGD Freshwater Fishing Digest.

Contact: NHFGD Region 1 (North Country), Lancaster
E-mail: reg1@wildlife.nh.gov Phone: 603-788-3164

UMBAGOG, LAKE Errol



FISHERY: Warmwater **ACRES:** 7628
TROPHIC: Stn 1,2 OLIGO Stn 3,4 MESO
AVG DEPTH: 10 **MAX DEPTH:** 45
SPECIES: SMB,ECP,HP,NP

ADDITIONAL INFO:

ACCESS: cartop at Magalloway River, or ramp at S end of lake

Contact NH Dept of Safety, Marine Patrol Bureau for information regarding waterbody restrictions (603) 293-0091

Water Access site (State, Federal, or Road-to-Public-Water)

Canoe/cartop

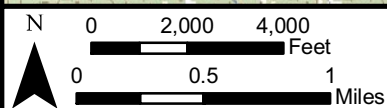
Shorebank

Ramp

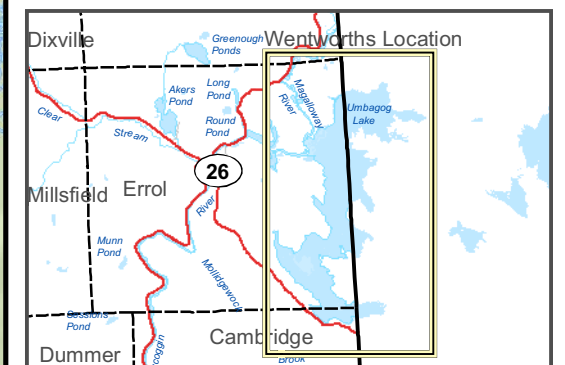
Bathymetric contour (feet)

Bathymetry provided by the NH Department of Environmental Services, Watershed Mgt Bureau

- Town boundary
 - Primary Route
 - Road or Street
 - Trail or other
 - Stream or Shoreline
 - Surface Water
 - Wetland
 - Conservation Land
 - Cleared Forest
 - Contour
 - Building
 - Restricted Access
 - Conservation
- Source: USGS



Most data presented on this map represent stock data sets obtained from NH GRANIT, Complex Systems Research Center, UNH. CSRC, NHOEP, NHFGD and the cooperating agencies make no claim as to the validity or reliability or to any implied uses of these data. NOT FOR NAVIGATION.



Directions: Rt 26