

For regulation information, please refer to the NHFGD Freshwater Fishing Digest.

Contact: NHFGD Region 4 (Southwest NH), Keene
E-mail: reg4@wildlife.nh.gov Phone: 603-352-9669

SPOFFORD LAKE Chesterfield

FISHERY: Cold/Warm **ACRES:** 732

TROPHIC LEVEL: OLIGO

AVG DEPTH: 30 **MAX DEPTH:** 66

SPECIES: RT,SMB,LMB,NP,ECP,WP,
RB,YP,BG,BC,CSF,HP

ADDITIONAL INFO: park 10 trailers,
adequate turnaround

ACCESS: gravel ramp at S end

Contact NH Dept of Safety, Marine Patrol Bureau for information regarding waterbody restrictions (603) 293-0091

Public Water Access site (State, Federal, or Road-to-Public-Water)


 Canoe/cartop

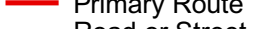
 Shorebank

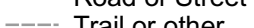
 Ramp

 Bathymetric contour (feet)


Bathymetry provided by the NH Department of Environmental Services, Watershed Mgt Bureau

 Town boundary


 Primary Route

 Road or Street

 Trail or other


 Stream or Shoreline

 Surface Water

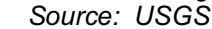
 Wetland

 Conservation Land

 Cleared


 Forest

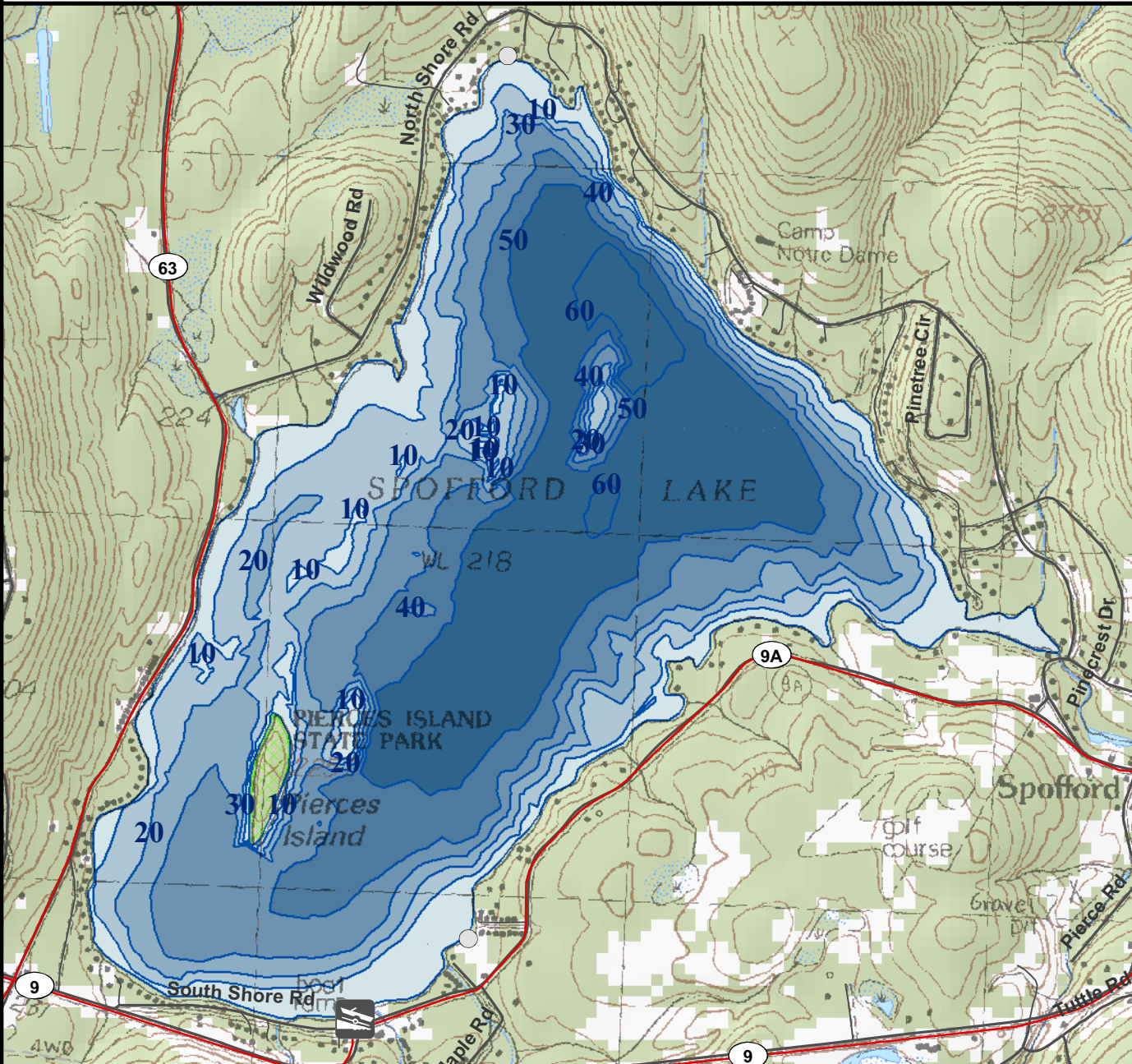
 Contour

 Building

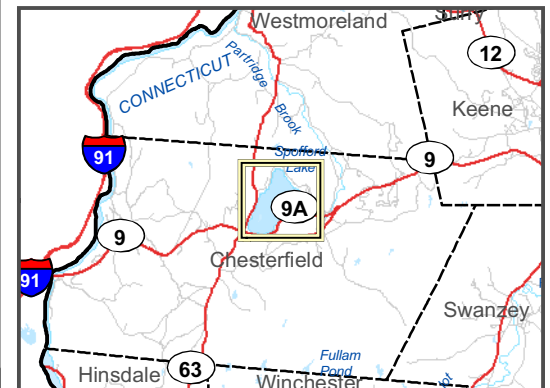
Source: USGS

 Restricted Access

 Conservation



Most data presented on this map represent stock data sets obtained from NH GRANIT, Complex Systems Research Center, UNH. CSRC, NHOEP, NHFGD and the cooperating agencies make no claim as to the validity or reliability or to any implied uses of these data. NOT FOR NAVIGATION.



Directions: Rt 9A