

For regulation information, please refer to the NHFGD Freshwater Fishing Digest.

Contact: NHFGD Region 2 (Lakes Region), New Hampton  
E-mail: reg2@wildlife.nh.gov Phone: 603-744-5470

# RED HILL POND Sandwich

**FISHERY: Warmwater ACRES: 173**

**TROPHIC LEVEL: EUTRO**

**AVG DEPTH: 10 MAX DEPTH: 23**


**SPECIES: ECP,HP**

ADDITIONAL INFO:

ACCESS: walk-in Rt 113

Contact NH Dept of Safety, Marine Patrol Bureau for information regarding waterbody restrictions (603) 293-0091

Public Water Access site (State, Federal, or Road-to-Public-Water)

 Canoe/cartop


 Shorebank


 Ramp


 Bathymetric contour (feet)

Bathymetry provided by the NH Department of Environmental Services, Watershed Mgt Bureau


 Town boundary


 Primary Route

 Road or Street

 Trail or other

 Stream or Shoreline

 Surface Water

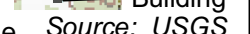
 Wetland

 Conservation Land

 Cleared

 Forest

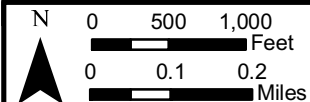
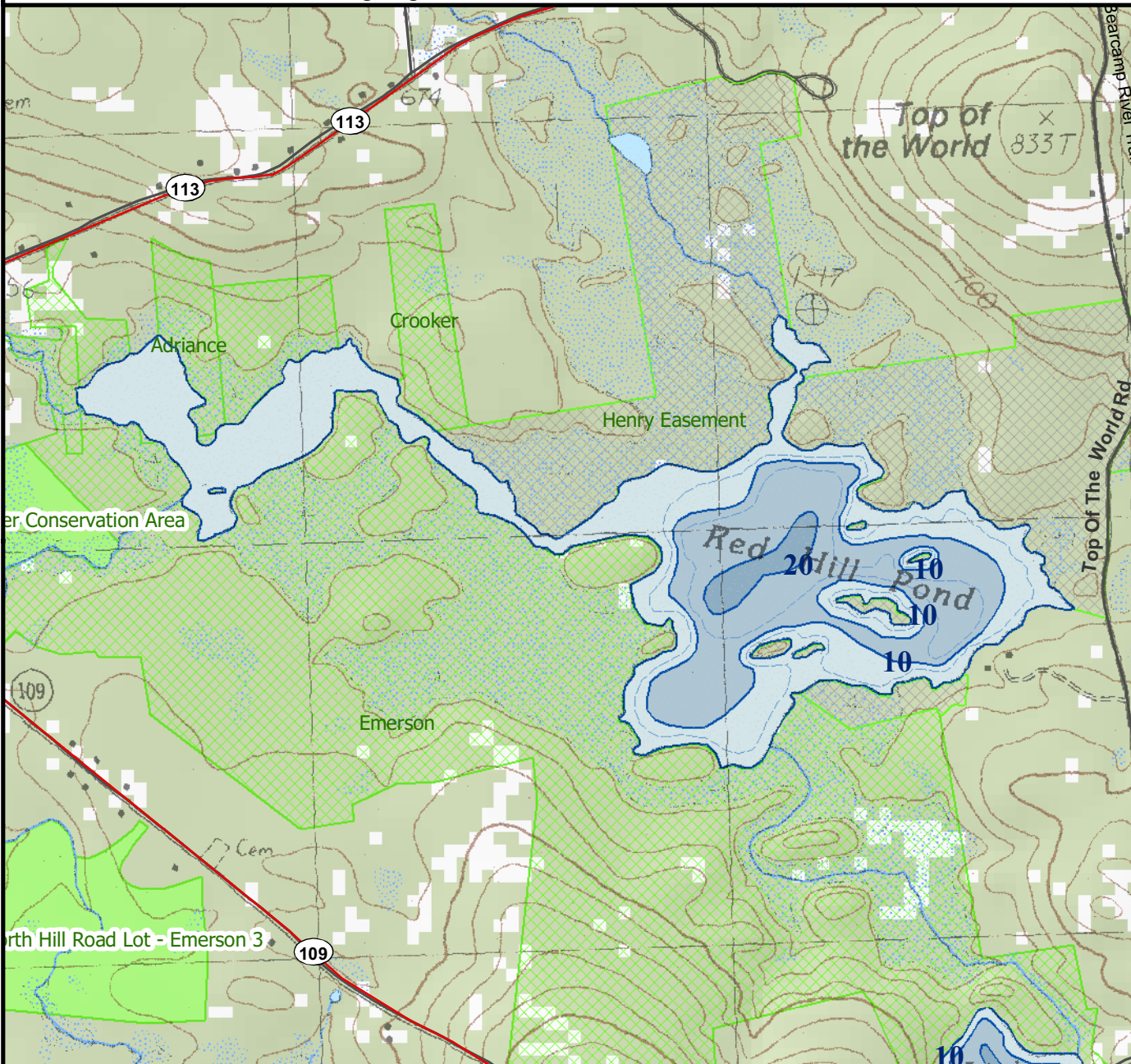
 Contour

 Building

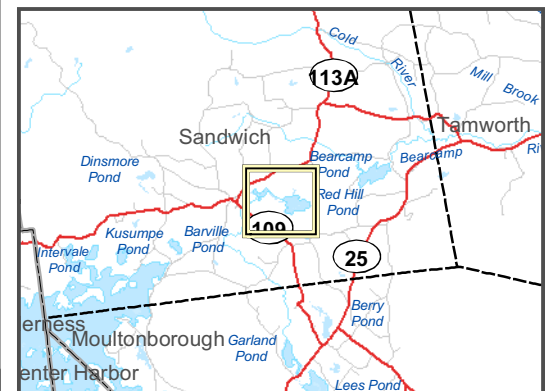
Source: USGS

 Restricted Access

 Conservation



Most data presented on this map represent stock data sets obtained from NH GRANIT, Complex Systems Research Center, UNH. CSRC, NHOEP, NHFGD and the cooperating agencies make no claim as to the validity or reliability or to any implied uses of these data. NOT FOR NAVIGATION.



Directions: