

For regulation information, please refer to the NHFGD Freshwater Fishing Digest.

Contact: NHFGD Region 4 (Southwest NH), Keene
E-mail: reg4@wildlife.nh.gov Phone: 603-352-9669

NUBANUSIT LAKE Nelson/Hancock

FISHERY: Coldwater **ACRES:** 718

TROPHIC LEVEL: OLIGO

AVG DEPTH: 40 **MAX DEPTH:** 97


SPECIES: RT,LT,SMB,ECP,YP,HP

ADDITIONAL INFO: 10 MPH limit

ACCESS: gravel ramp, limited

Contact NH Dept of Safety, Marine Patrol Bureau for information regarding waterbody restrictions (603) 293-0091

Public Water Access site (State, Federal, or Road-to-Public-Water)

 Canoe/cartop


 Shorebank


 Ramp


 Bathymetric contour (feet)

Bathymetry provided by the NH Department of Environmental Services, Watershed Mgt Bureau

 Town boundary


 Primary Route

 Road or Street

 Trail or other

 Stream or Shoreline

 Surface Water

 Wetland

 Conservation Land

 Cleared

 Forest

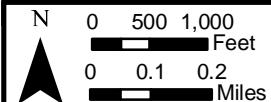
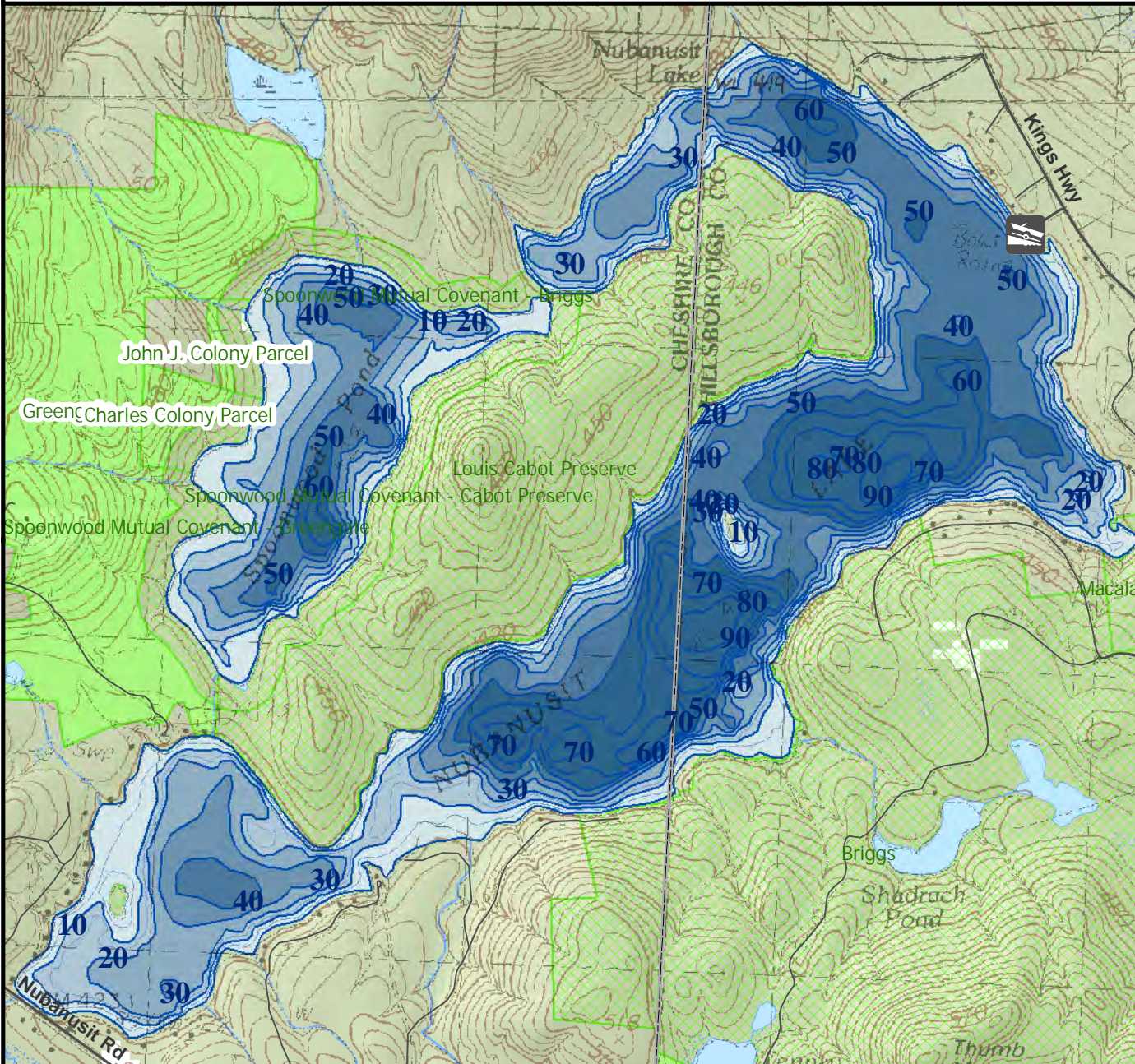
 Contour

 Building

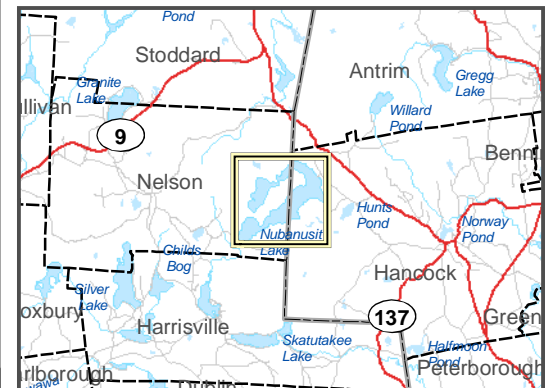
Source: USGS

 Restricted Access

 Conservation



Most data presented on this map represent stock data sets obtained from NH GRANIT, Complex Systems Research Center, UNH. CSRC, NHOEP, NHFGD and the cooperating agencies make no claim as to the validity or reliability or to any implied uses of these data. NOT FOR NAVIGATION.

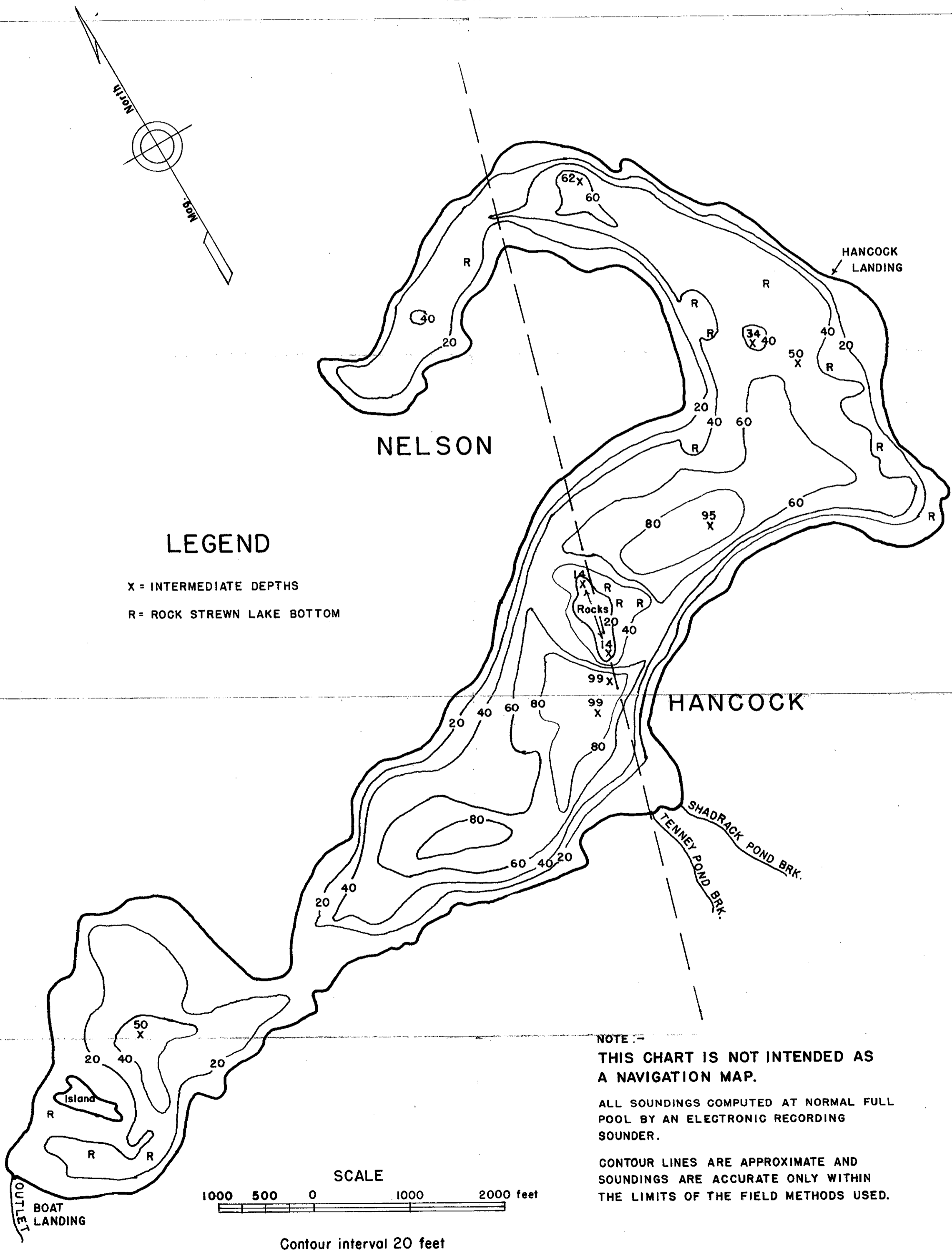


Directions: Rt 123 to Hunts Pond Rd, past Hunts Pond to ramp

NUBANUSIT LAKE DEPTH CONTOUR CHART

PREPARED AND PUBLISHED BY
THE NEW HAMPSHIRE FISH & GAME DEPARTMENT

FIELD DATA COLLECTED AS A SEGMENT OF
DINGELL-JOHNSON FEDERAL AID PROJECT F 10 R
FEBRUARY 1966



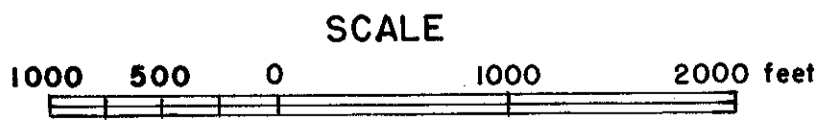
LEGEND

X = INTERMEDIATE DEPTHS
R = ROCK STREWN LAKE BOTTOM

NOTE
THIS CHART IS NOT INTENDED AS
A NAVIGATION MAP.

ALL SOUNDINGS COMPUTED AT NORMAL FULL
POOL BY AN ELECTRONIC RECORDING
SOUNDER.

CONTOUR LINES ARE APPROXIMATE AND
SOUNDINGS ARE ACCURATE ONLY WITHIN
THE LIMITS OF THE FIELD METHODS USED.



Contour interval 20 feet