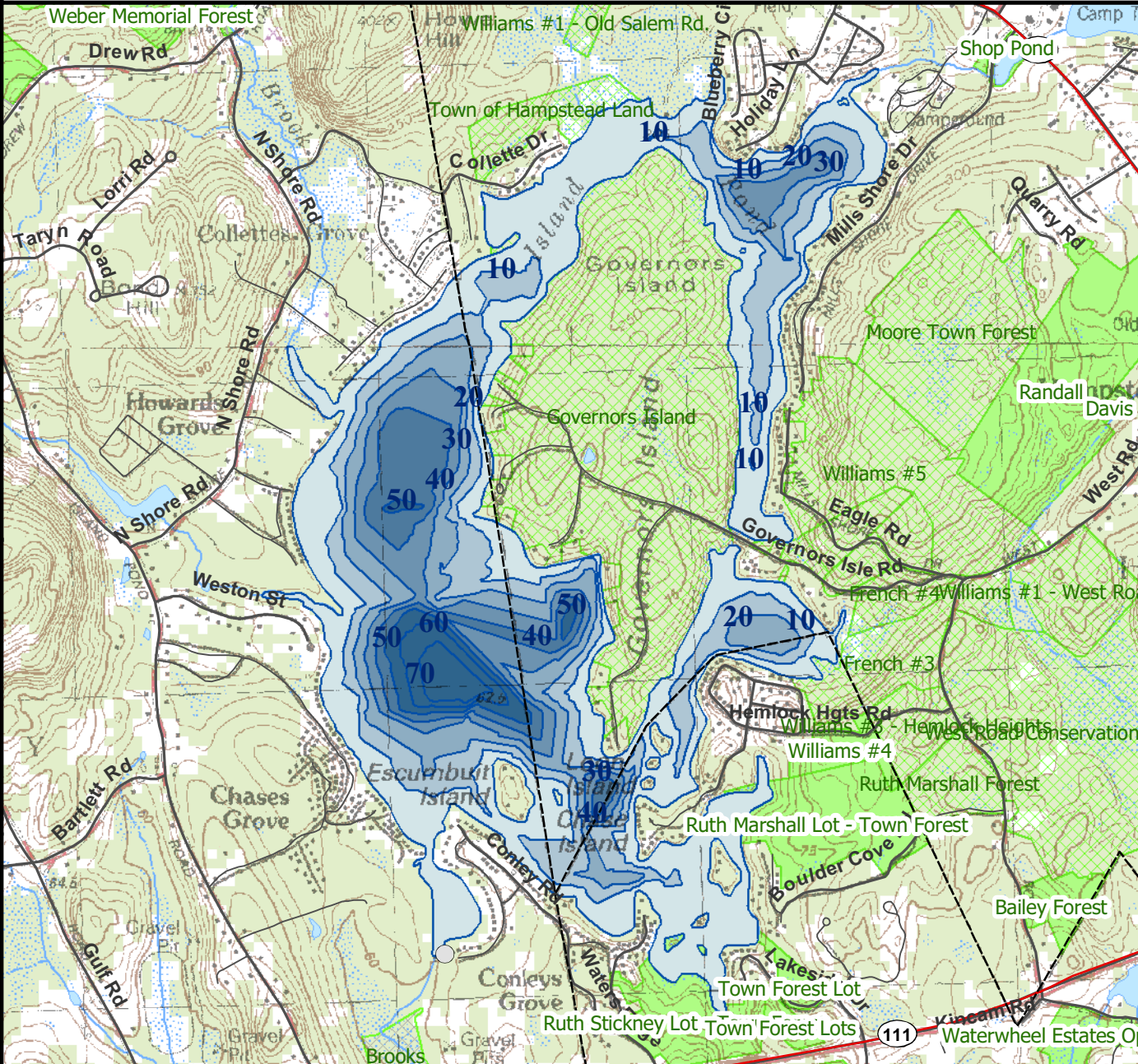


For regulation information, please refer to the NHFGD Freshwater Fishing Digest.

Contact: NHFGD Inland Fisheries Division, Concord
E-mail: fish@wildlife.nh.gov Phone: 603-271-2501

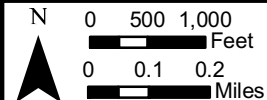
ISLAND POND Derry, Atkinson, Hampstead



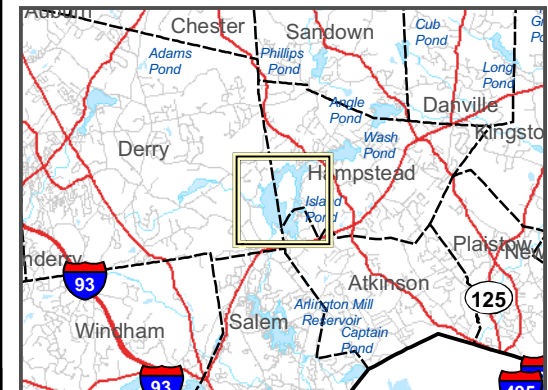
FISHERY: Cold/Warm	ACRES: 532
TROPHIC LEVEL: EUTRO	
AVG DEPTH: 34	MAX DEPTH: 70
SPECIES: EBT, RT, BT, SMB, LMB, ECP, BBH, WP, BC, BG	
ADDITIONAL INFO:	
ACCESS: Town ramp, limited access residents only, SW end	

Contact NH Dept of Safety, Marine Patrol Bureau for information regarding waterbody restrictions (603) 293-0091
Public Water Access site (State, Federal, or Road-to-Public-Water)

- Canoe/cartop
 - Shorebank
 - Ramp
 - Bathymetric contour (feet)
- Bathymetry provided by the NH Department of Environmental Services, Watershed Mgt Bureau
- Town boundary
 - Primary Route
 - Road or Street
 - Trail or other
 - Stream or Shoreline
 - Surface Water
 - Wetland
 - Conservation Land
 - Cleared
 - Forest
 - Contour
 - Building
 - Restricted Access Conservation
- Source: USGS



Most data presented on this map represent stock data sets obtained from NH GRANIT, Complex Systems Research Center, UNH. CSRC, NHOEP, NHFGD and the cooperating agencies make no claim as to the validity or reliability or to any implied uses of these data. NOT FOR NAVIGATION.



Directions: