

For regulation information, please refer to the NHFGD Freshwater Fishing Digest.

Contact: NHFGD Region 2 (Lakes Region), New Hampton
E-mail: reg2@nhfgd.org Phone: 603-744-5470

IONA LAKE Albany

FISHERY: Warm/Cold ACRES: 74

TROPHIC LEVEL: MESO

AVG DEPTH: 16 MAX DEPTH: 35

SPECIES: SMB,ECP,RT,RS,YP,SF,BBH

ADDITIONAL INFO: (68 acres calculated)

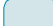

ACCESS: limited access, through Pine Acres Campground

Contact NH Dept of Safety, Marine Patrol Bureau for information regarding waterbody restrictions (603) 293-0091

 Public Access (NHOEP)

 Bathymetric contour

Bathymetry (depth in feet)


 Less than 10  30 to 40

 10 to 20  40 to 50

 20 to 30  Greater than 50

Bathymetry data provided by the NH Department of Environmental Services, Watershed Mgt Bureau

 Town boundary

 Primary Route

 Road or Street

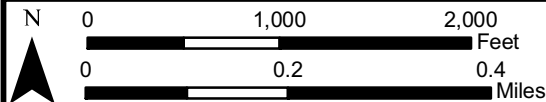
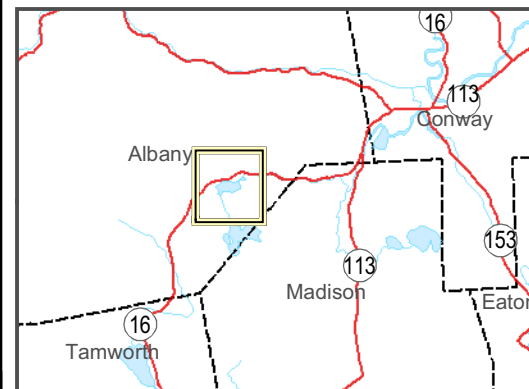
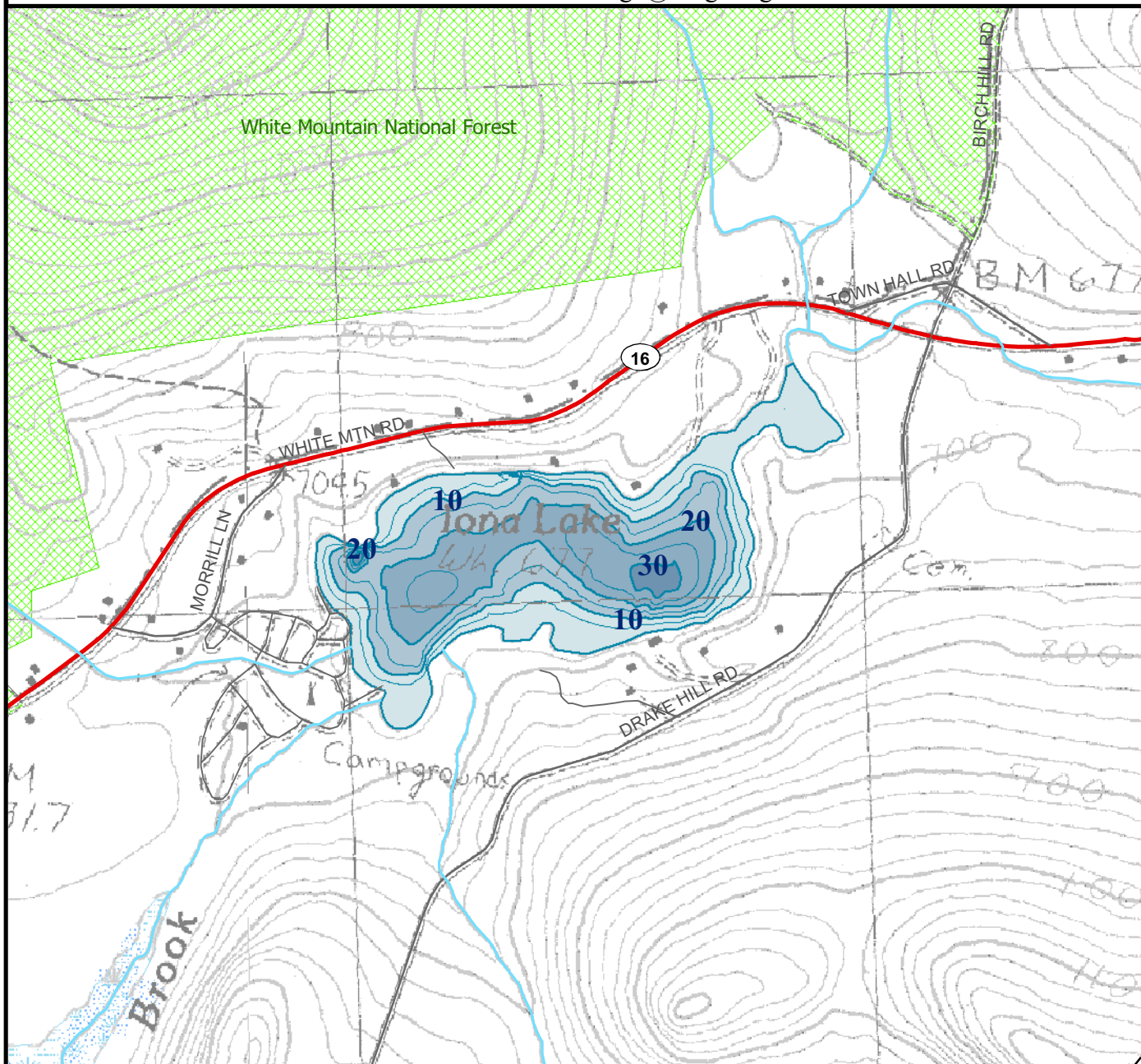
 Trail or other

 Stream or Shoreline

 Surface Water

 Wetland

 Conservation/Public Land



Most data presented on this map represent stock data sets obtained from NH GRANIT, Complex Systems Research Center, UNH. CSRC, NHOEP, NHFGD and the cooperating agencies make no claim as to the validity or reliability or to any implied uses of these data. NOT FOR NAVIGATION.

Directions: