

For regulation information, please refer to the NHFGD Freshwater Fishing Digest.

Contact: NHFGD Region 2 (Lakes Region), New Hampton
E-mail: reg2@wildlife.nh.gov Phone: 603-744-5470

GRAFTON POND

Grafton

FISHERY: Warmwater ACRES: 321

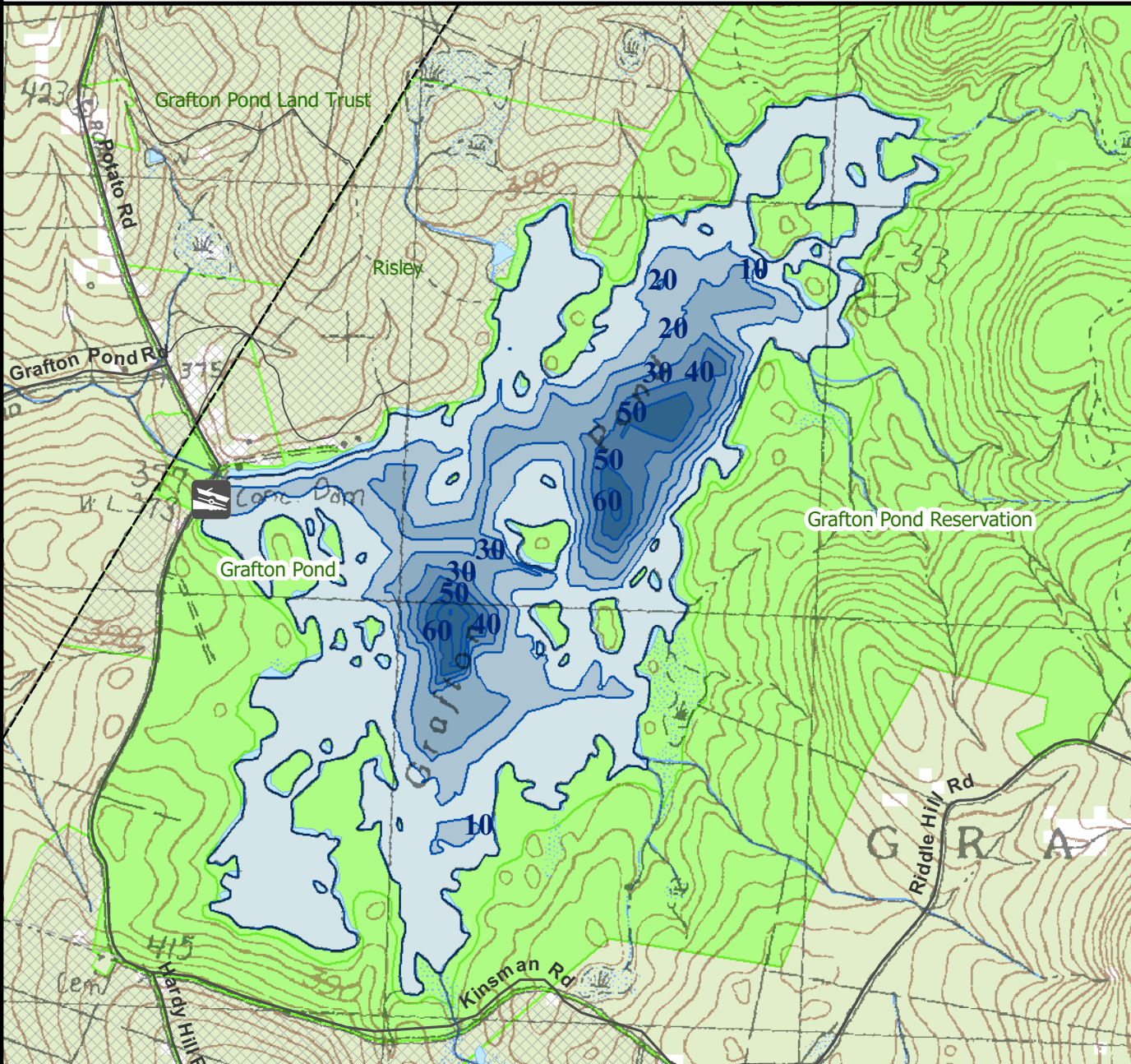
TROPHIC LEVEL: MESO

AVG DEPTH: 13 MAX DEPTH: 72

SPECIES: SMB,ECP,YP,SF,BBH

ADDITIONAL INFO: Undeveloped, 6HP limit

ACCESS: gravel ramp, limited



Contact NH Dept of Safety, Marine Patrol Bureau for information regarding waterbody restrictions (603) 293-0091
Public Water Access site (State, Federal, or Road-to-Public-Water)

Canoe/cartop

Shorebank

Ramp

Bathymetric contour (feet)

Bathymetry provided by the NH Department of Environmental Services, Watershed Mgt Bureau

Town boundary

Primary Route

Road or Street

Trail or other

Stream or Shoreline

Surface Water

Wetland

Conservation Land

Cleared

Forest

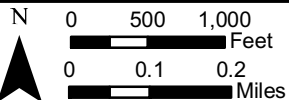
Contour

Building

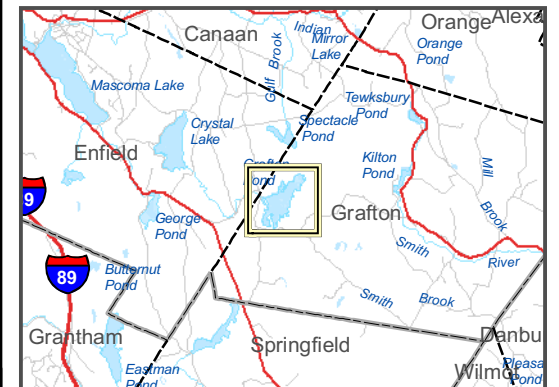
Source: USGS

Restricted Access

Conservation



Most data presented on this map represent stock data sets obtained from NH GRANIT, Complex Systems Research Center, UNH. CSRC, NHOEP, NHFGD and the cooperating agencies make no claim as to the validity or reliability or to any implied uses of these data. NOT FOR NAVIGATION.



Directions: Grafton Pond Rd