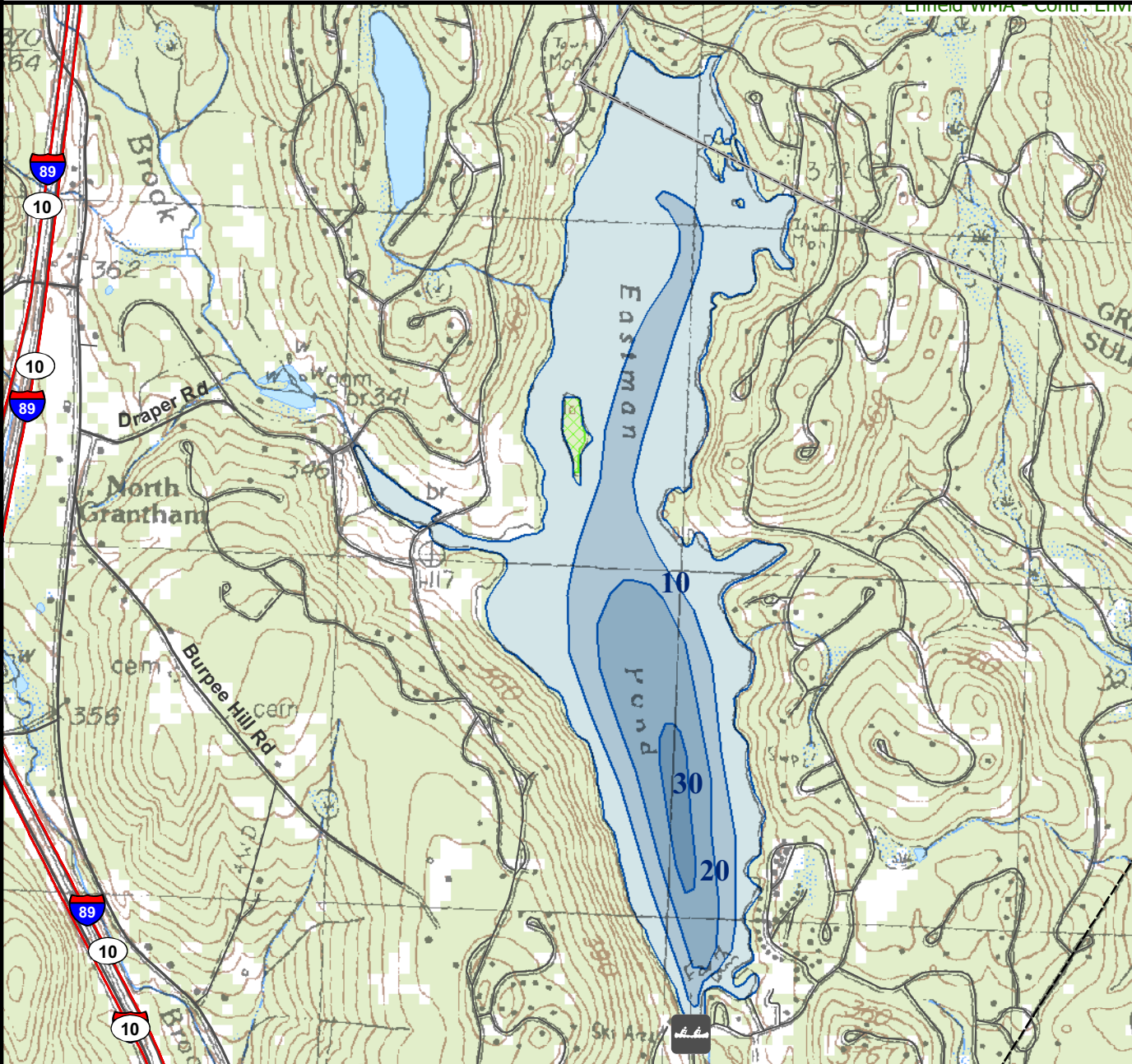


For regulation information, please refer to the NHFGD Freshwater Fishing Digest.

Contact: NHFGD Region 2 (Lakes Region), New Hampton  
E-mail: reg2@wildlife.nh.gov Phone: 603-744-5470

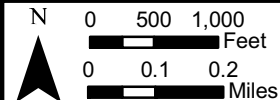
# EASTMAN POND Grantham



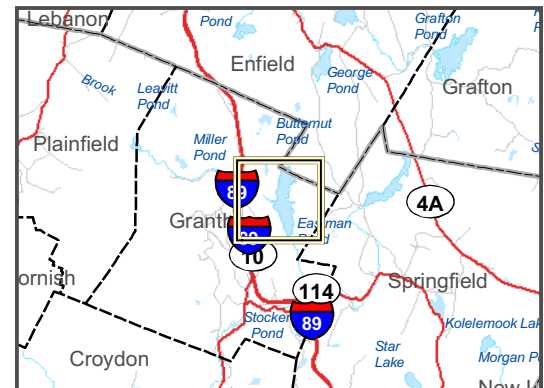
<b>FISHERY:</b>	<b>ACRES: 320</b>
<b>TROPHIC LEVEL: MESO</b>	
<b>AVG DEPTH: 10    MAX DEPTH: 30</b>	
<b>SPECIES:</b>	
ADDITIONAL INFO: 10 MPH speed limit	
ACCESS: gravel launch	

Contact NH Dept of Safety, Marine Patrol Bureau for information regarding waterbody restrictions (603) 293-0091  
Public Water Access site (State, Federal, or Road-to-Public-Water)

- Canoe/cartop
  - Shorebank
  - Ramp
  - Bathymetric contour (feet)
- Bathymetry provided by the NH Department of Environmental Services, Watershed Mgt Bureau
- Town boundary
  - Primary Route
  - Road or Street
  - Trail or other
  - Stream or Shoreline
  - Surface Water
  - Wetland
  - Conservation Land
  - Cleared
  - Forest
  - Contour
  - Building
  - Restricted Access Conservation
- Source: USGS



Most data presented on this map represent stock data sets obtained from NH GRANIT, Complex Systems Research Center, UNH. CSRC, NHOEP, NHFGD and the cooperating agencies make no claim as to the validity or reliability or to any implied uses of these data.  
**NOT FOR NAVIGATION.**



Directions: Private road off Rt 10