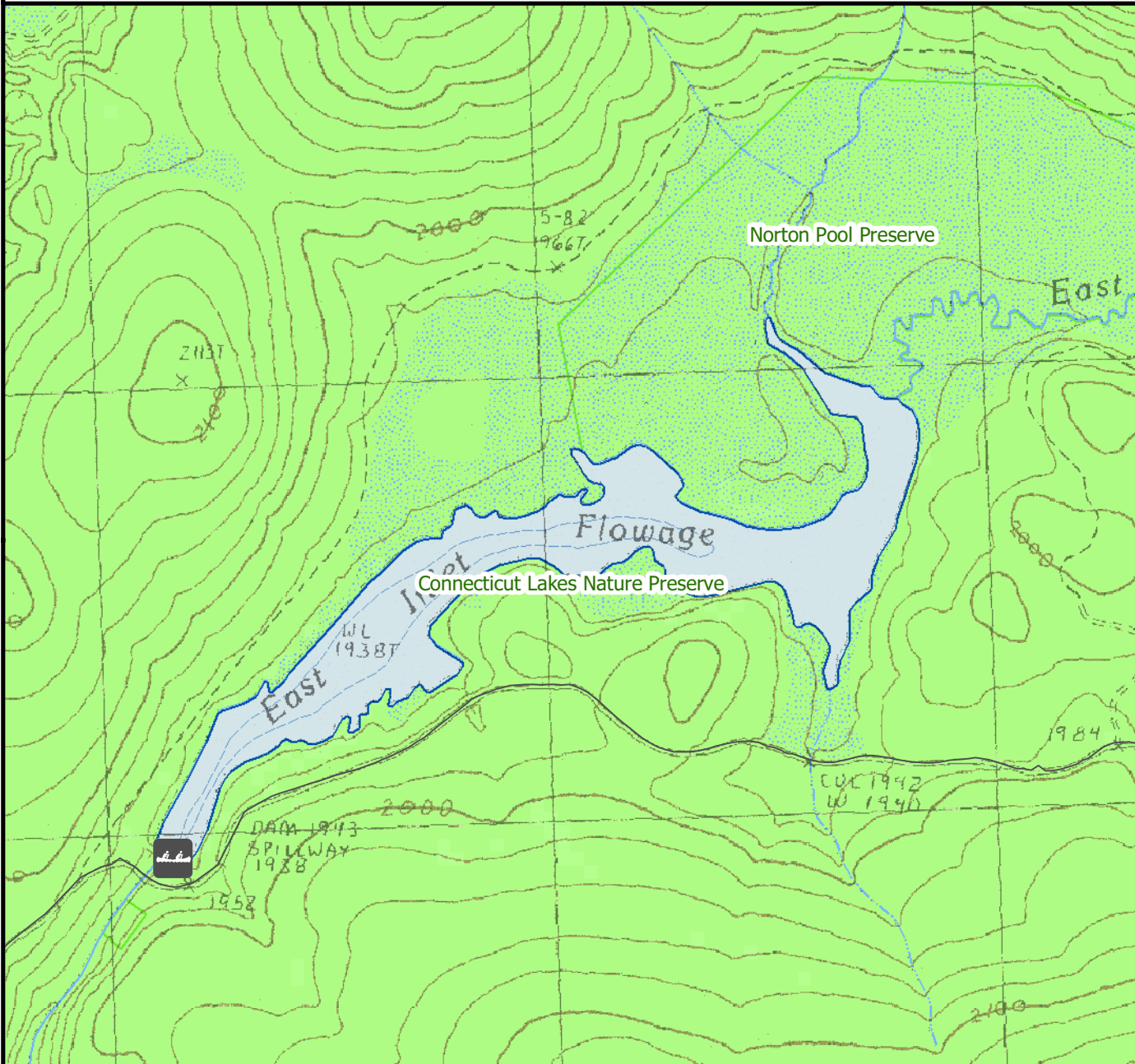


For regulation information, please refer to the NHFGD Freshwater Fishing Digest.

Contact: NHFGD Region 1 (North Country), Lancaster
E-mail: reg1@wildlife.nh.gov Phone: 603-788-3164

EAST INLET Pittsburg



FISHERY: Coldwater	ACRES: 60
TROPHIC LEVEL: EUTRO	
AVG DEPTH: 5	MAX DEPTH: 10
SPECIES: EBT	

ADDITIONAL INFO: Private gravel road subject to closure

ACCESS: East Inlet Cartop Facility gravel launch, parking

Contact NH Dept of Safety, Marine Patrol Bureau for information regarding waterbody restrictions (603) 293-0091

Public Water Access site (State, Federal, or Road-to-Public-Water)

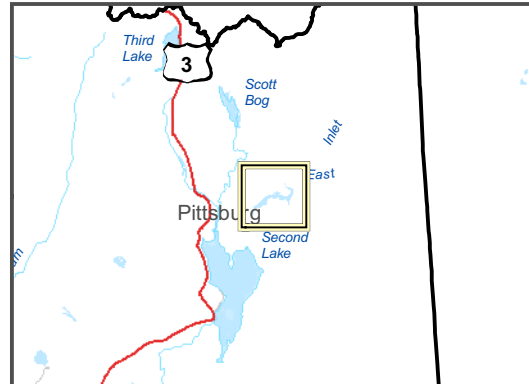
- Canoe/cartop
- Shorebank
- Ramp

Bathymetric contour (feet)
Bathymetry provided by the NH Department of Environmental Services, Watershed Mgt Bureau

- Town boundary
 - Primary Route
 - Road or Street
 - Trail or other
 - Stream or Shoreline
 - Surface Water
 - Wetland
 - Conservation Land
 - Cleared
 - Forest
 - Contour
 - Building
 - Restricted Access Conservation
- Source: USGS



Most data presented on this map represent stock data sets obtained from NH GRANIT, Complex Systems Research Center, UNH. CSRC, NHOEP, NHFGD and the cooperating agencies make no claim as to the validity or reliability or to any implied uses of these data. NOT FOR NAVIGATION.



Directions: 3 mi past 2nd CT Lake, turn R on Pint Rd, .1 mi L, 1.5 mi on L