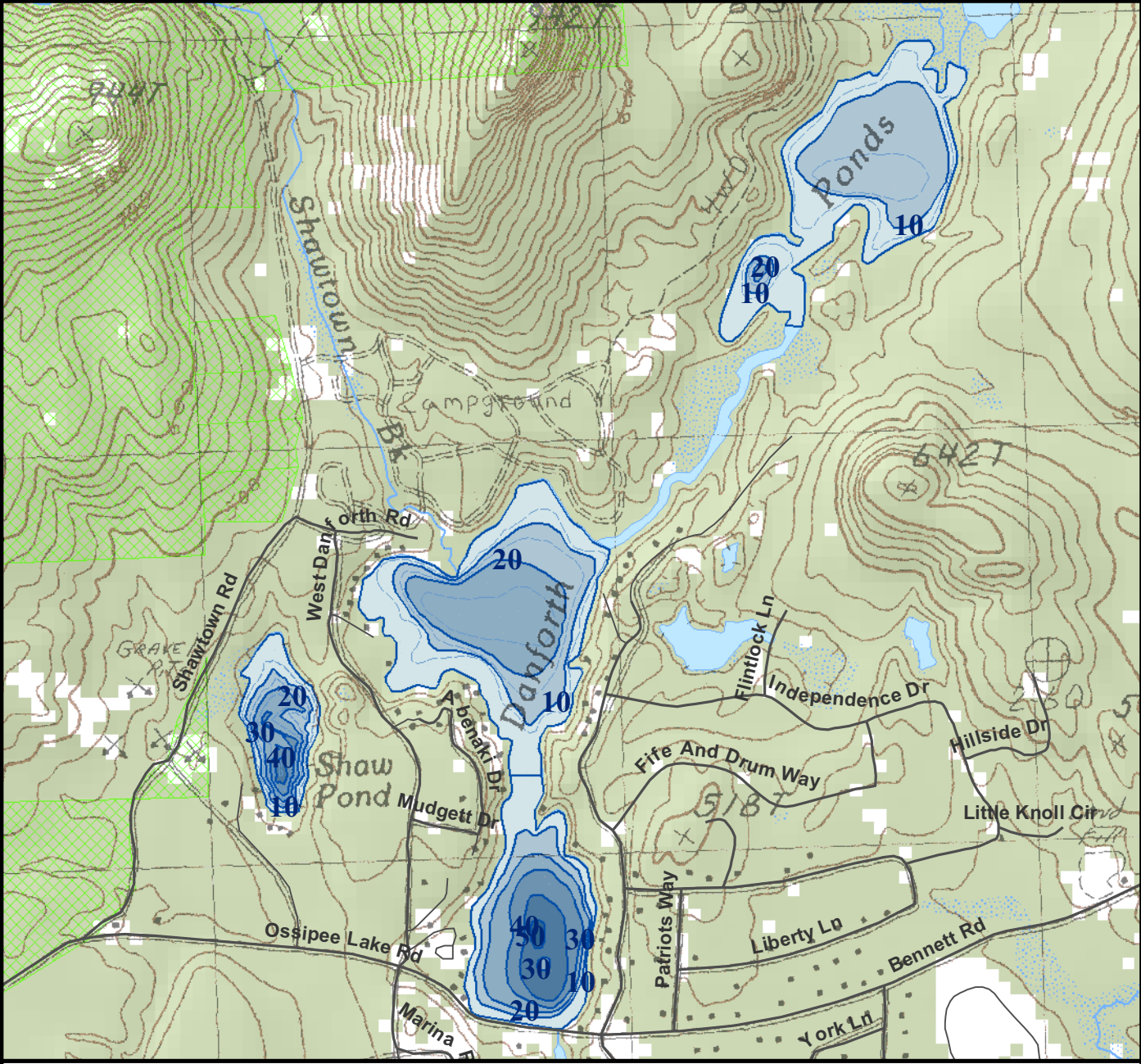


For regulation information, please refer to the NHFGD Freshwater Fishing Digest.

Contact: NHFGD Region 2 (Lakes Region), New Hampton
E-mail: reg2@nhfgd.org Phone: 603-744-5470

DANFORTH PONDS Freedom

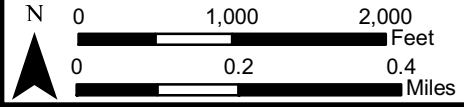


FISHERY: Warmwater			
TROPHIC LEVEL: MESO			
DEPTH	AVG	MAX	ACRES
Upper Danforth	9 Ft	21 Ft	40
Middle Danforth	15 Ft	32 Ft	51
Lower Danforth	23 Ft	55 Ft	32
SPECIES: SMB,LMB,ECP,BBH,YP,SF			
ADDITIONAL INFO: channel connects			
ACCESS: No public access canoe/cartop limited via Broad Bay			

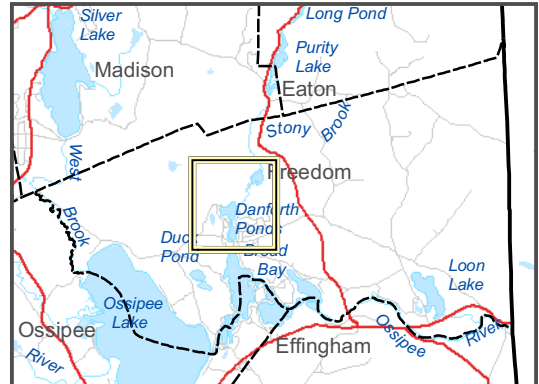
Contact NH Dept of Safety, Marine Patrol Bureau for information regarding waterbody restrictions (603) 293-0091

Water Access site (State, Federal, or Road-to-Public-Water)

- Canoe/cartop
 - Shorebank
 - Ramp
 - Bathymetric contour (feet)
 - Bathymetry provided by the NH Department of Environmental Services, Watershed Mgt Bureau
 - Town boundary
 - Primary Route
 - Road or Street
 - Trail or other
 - Stream or Shoreline
 - Surface Water
 - Wetland
 - Conservation Land
 - Cleared
 - Forest
 - Contour
 - Building
 - Restricted Access
 - Conservation
- Source: USGS



Most data presented on this map represent stock data sets obtained from NH GRANIT, Complex Systems Research Center, UNH. CSRC, NHOEP, NHFGD and the cooperating agencies make no claim as to the validity or reliability or to any implied uses of these data. NOT FOR NAVIGATION.



Directions: Bennett Rd from Rte 153; or Rte 41 W Ossipee to Ossipee Lake Rd