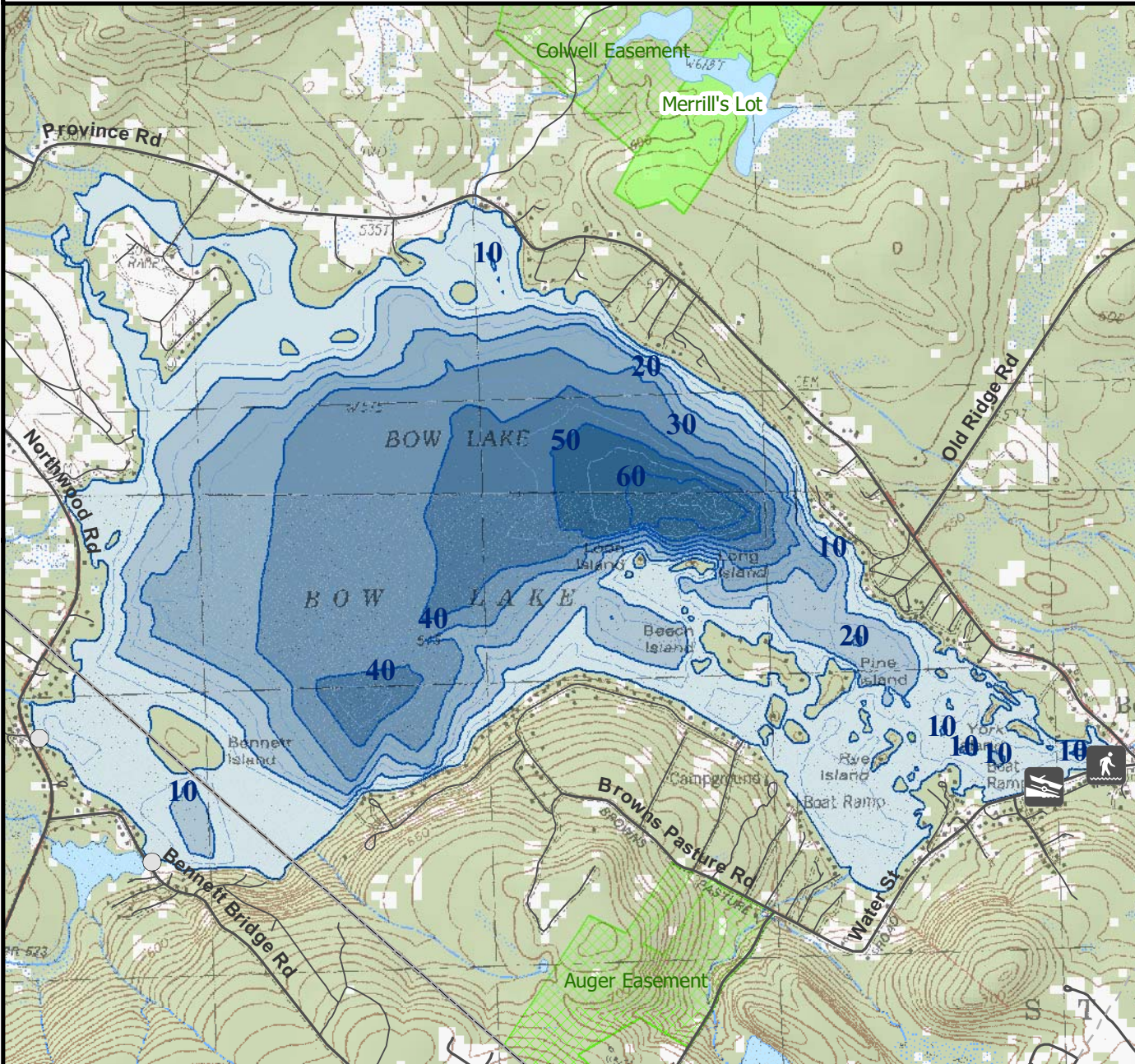


For regulation information, please refer to the NHFGD Freshwater Fishing Digest.

Contact: NHFGD Inland Fisheries Division, Concord  
E-mail: fish@wildlife.nh.gov Phone: 603-271-2501

# BOW LAKE Strafford



**FISHERY:** Cold/Warm **ACRES:** 1140  
**TROPHIC LEVEL:** MESO  
**AVG DEPTH:** 10 **MAX DEPTH:** 65  
**SPECIES:** RT,BT,SMB,LMB,ECP,HP,WP

ADDITIONAL INFO:

ACCESS: concrete ramp at Water St, or shorebank at Mary Waldron Park

Contact NH Dept of Safety, Marine Patrol Bureau for information regarding waterbody restrictions (603) 293-0091

Public Water Access site (State, Federal, or Road-to-Public-Water)

Canoe/cartop

Shorebank

Ramp

Bathymetric contour (feet)

Bathymetry provided by the NH Department of Environmental Services, Watershed Mgt Bureau

Town boundary

Primary Route

Road or Street

Trail or other

Stream or Shoreline

Surface Water

Wetland

Conservation Land

Cleared

Forest

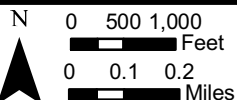
Contour

Building

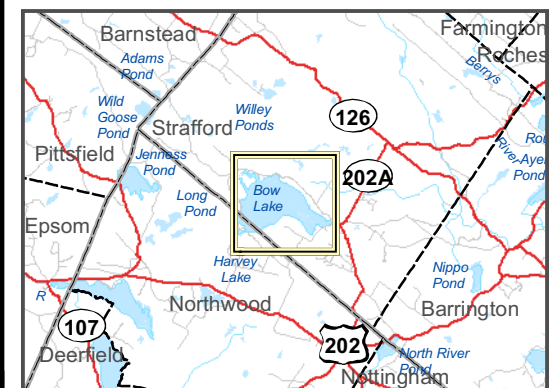
Source: USGS

Restricted Access

Conservation



Most data presented on this map represent stock data sets obtained from NH GRANIT, Complex Systems Research Center, UNH. CSRC, NHOEP, NHFGD and the cooperating agencies make no claim as to the validity or reliability or to any implied uses of these data. NOT FOR NAVIGATION.



Directions: Bow Lake Rd park at Bow Lake Village