

For regulation information, please refer to the NHFGD Freshwater Fishing Digest.

Contact: NHFGD Region 1 (North Country), Lancaster
E-mail: reg1@wildlife.nh.gov Phone: 603-788-3164

AKERS POND Errol

FISHERY: Coldwater **ACRES:** 276

TROPIC LEVEL: MESO

AVG. DEPTH: 18 **MAX. DEPTH:** 26


SPECIES: RT,LMB

ADDITIONAL INFO:

ACCESS: Akers Pond Boat Ramp


Contact NH Dept of Safety, Marine Patrol Bureau for information regarding waterbody restrictions (603) 293-0091

Public Water Access site (State, Federal, or Road-to-Public-Water)

 Canoe/cartop

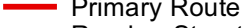
 Shorebank

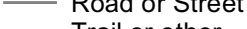
 Ramp

 Bathymetric contour (feet)

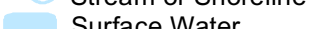
Bathymetry provided by the NH Department of Environmental Services, Watershed Mgt Bureau


 Town boundary

 Primary Route

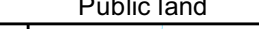
 Road or Street

 Trail or other

 Stream or Shoreline

 Surface Water

 Wetland

 Conservation or Public land

 Cleared

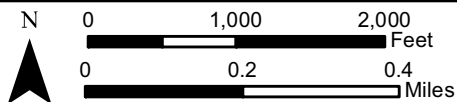
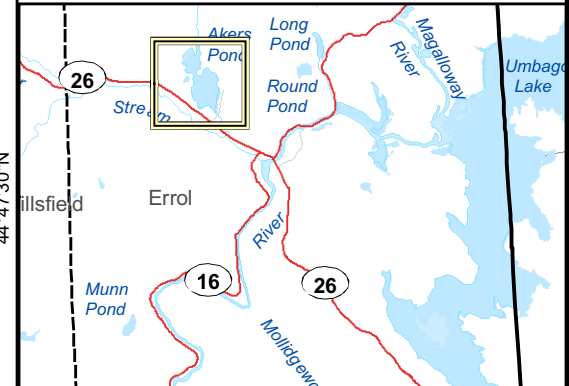
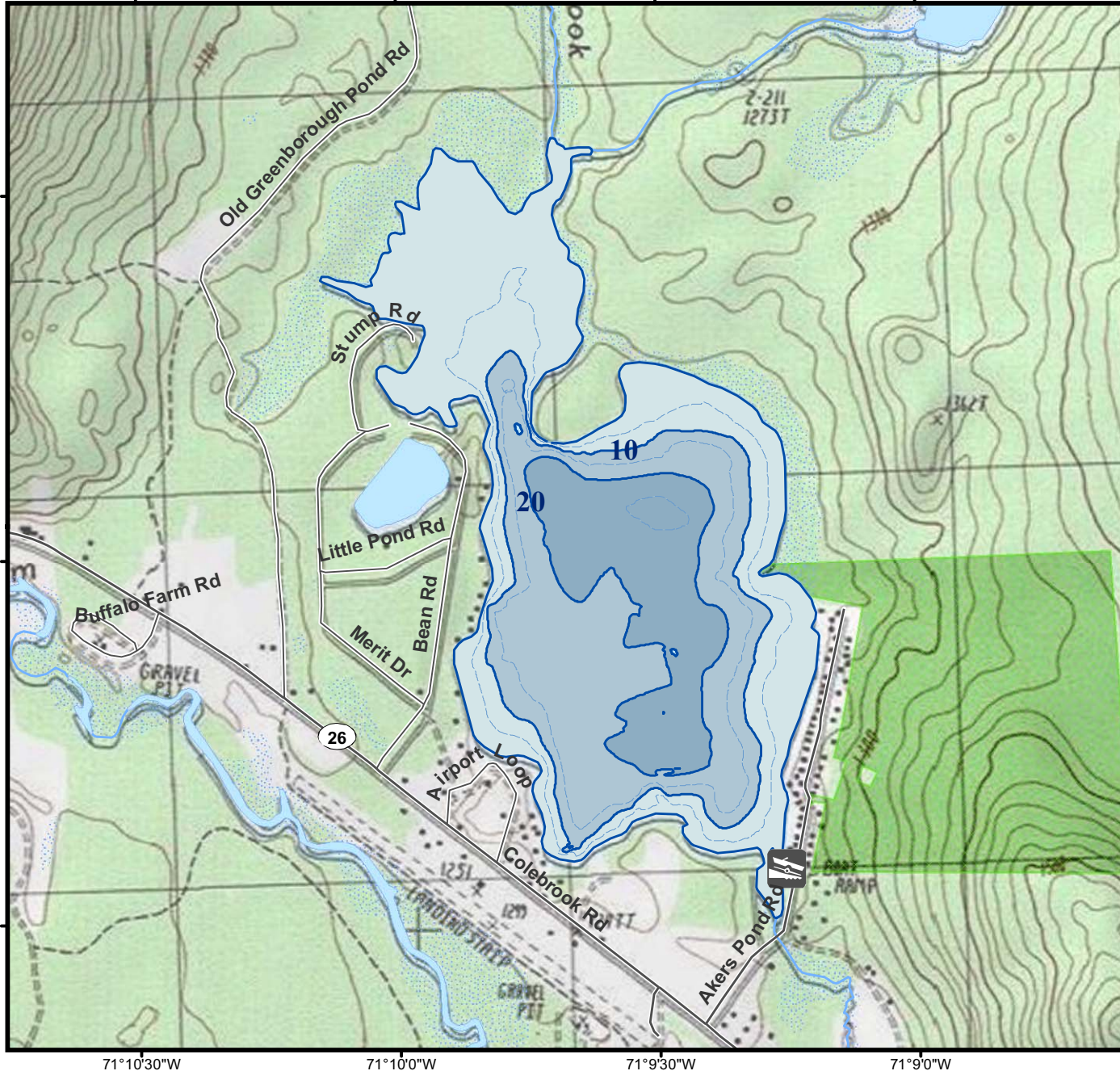
 Forest

 Contour

 Building

Source: USGS

 Restricted Access Conservation



Most data presented on this map represent stock data sets obtained from NH GRANIT, Complex Systems Research Center, UNH. CSRC, NHOEP, NHFGD and the cooperating agencies make no claim as to the validity or reliability or to any implied uses of these data. NOT FOR NAVIGATION.

Directions: 0.3 mi from Rt 26 on Akers Pond Rd